



Deluxe Scraper Kit



Cultivator Spring Assembly



Cultivator Shank Assembly



Point/Shoe Planter Kit

Planter/Drill Kits

Planter Bearing/Flange Kit

- Application: Case IH planters and drills using opener disk assemblies 90850C92 and 90851C92
- Components necessary to replace bearing/flange assembly in disk assemblies 90850C92 and 90851C92. Kit also includes dust cap
- Bearing is pressed into the flange for easy installation
- Handy package for tool box or farm shop



**Part No. B95205
with Bolts**

Drill Bearing/Flange Kit

- Application: Case IH grain drills using opener disk assembly part number 603020R92 (510, 5100, 5200, 620, 6200)
- Components necessary to replace bearing/flange in disk assembly 603020R92. Kit also includes dust cap
- Bearing is pressed into the flange for easy installation
- Handy package for tool box or farm shop



**Part No. B95204
with Bolts**

Drill Bearing Kits

- Application: Case IH grain drills using opener disk assembly part number 603020R92 (510, 5100, 5200, 620, 6200)
- Components necessary to replace bearing in disk assembly 603020R92
- Handy package for tool box or farm shop



**Part No. B94353
with Bolts**



**Part No. B94352
with Rivets**

Opener Disk Assemblies (Bolted Flange)

- Earth Metal® Disk
- Heavy-duty bearing and flange
- Bolted Flange
- LH - B96090
- RH - B96091



**Part No. B96090
with Bolts**

Point/Shoe Planter Kit

- Application: 800, 900, 950, 955, 1200 planters
- Includes shoe, point, deflector, and mounting hardware. All genuine Case IH components
- Handy package for tool box or farm shop



**800, 900, 950, 955 Planters -
Part No. B94595 (shown)
1200 Planters - Part No. B96489**

Firming Point Kit

- Application: 800, 900, 950, 955, 1200 planters
- Handy carded two-pack
- Genuine Case IH points



Part No. B94735

IMPLEMENT PRODUCT SUPPORT KITS

Planter/Drill Kits

Planter Brush Kit

- Application: 800, 900, 950, 955 planters
- Complete brush assembly
- Ready to install
- Genuine Case IH components



Part No. 145156C91E

Hinge Kit

- Application: 800, 900, 950, 955 planters seed and chemical hoppers
- Carded products
- Includes all components and hardware in one package



Part No. B94741

Roller, Feed

- Application: 800, 900, 950, 955, 1200 planters
- Granular chemical
- Carded products
- Handy package



Part No. B94740

Down Pressure Spring Kit

- Application: 800, 900, 950, 955, 1200 planters
- Includes springs and hardware
- Ready to install
- Handy package



Part No. B95269

Press Wheel Bearing Kit

- Application: 800, 900, 950, 955, 1200 planters
- Original equipment quality bearing
- Handy service package



Part No. B95270

Closing Disk Kit

- Application: 800, 900, 950, 955, 1200 planters
- Genuine Case IH components
- Kit includes: disk assembly (2), dust caps and hardware
- Handy service package



Part No. B95381

Scraper Blade Kit

- Application: 800, 900, 950, 955, 1200 planters
- Kit includes scraper blades and rivets
- Original equipment components
- Handy package



Part No. B95271

Deluxe Scraper Kit

- Application: 800, 900, 950, 955, 1200 planters
- Kit includes scraper assemblies (LH and RH) and mounting hardware
- Part number B95272 for newer models after S/N 19344
- Part number B95395 for previous models before S/N 19344
- Handy service packages

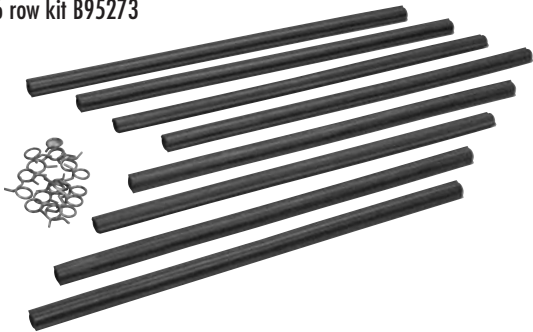


Part No. B95272

Planter/Drill Kits

Fertilizer Hose Kit

- Application: 800, 900, 955 planters
- 8 row kit B95274
- 6 row kit B95273
- Kit includes hoses and clamps



Part No. B95273

Row Opener Kit

- Application: 800, 900, 950, 955, 1200 planters
- Kit includes opener disk assemblies (LH and RH), shoe, firming point, deflector and hardware
- Original equipment components



800 - 955 Series Part No. B95225 (shown)
1200 Series Part No. B96480

Pawl Cover Kit

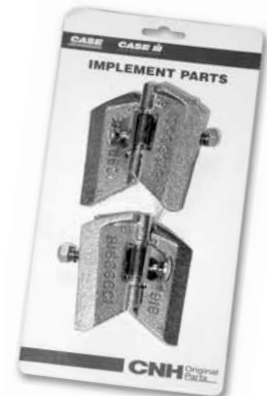
- Application: 800 plate planter
- Original equipment components



Part No. B95369

Scraper Assembly

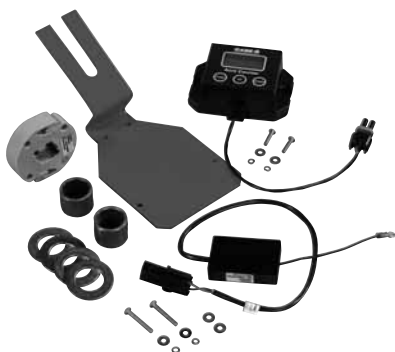
- Application: for drill models 510, 620, 5100, 5300, 5400, 6200
- Complete assembly
- Heavy-duty cast scraper blades
- Original equipment components
- Handy uptime pak



Card Pack (shown) Part No. 843364C92C
Bulk Pack (25 pieces) Part No. 843364C92B

Electronic Acre Counter

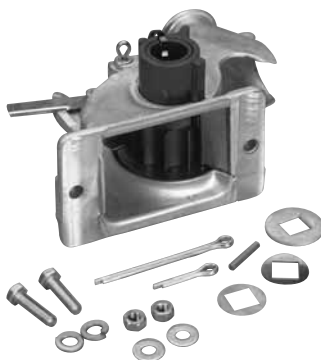
- Application: 319361A1—5100-5300 drills
- 319362A1—5400 drills
- 319363A1—5500 drills



Part No. 319362A1

Complete Feed Cup

- Application: 51-5400 drills
- Complete cup-ready to install
- Genuine Case IH components



Part No. B95333

Row Depth Adjustment Kit

- Easy to adjust
- One hand operation
- Includes handle, hardware and handle retainer clip
- For 800, 900, 950, 955, 1200 planters
- Handy service pack



Part No. B96640

IMPLEMENT PRODUCT SUPPORT KITS

Kits for 1200 Planters

Singulator Assembly Kit

- Complete ready to install
- For all 1200 planter
- Provides more precise spool adjustments
- Less maintenance and longer spool life
- Requires new style seed agitator Part No. 326924A2E



Part No. 413842A1E

Singulator Kit

- Includes new style singulator assembly, seed agitator, hardware and I-sheet
- For all 1200 planters



Part No. 86994218E

Agitator Seed Assembly Kit

- For 1200 planter 2003 models and models with new singulator assembly 413842A1
- Handy service pack



Part No. 326924A2E

Door and Latch Kit

- Kit includes door chute and latch pin
- Easy to operate—one hand opening and closing of the door
- Handle service pack



Part No. B96694

Seed Meter Drive Kit

- Kit includes shaft, bearings and retainer ring
- For 2003 meters
- Handy service pack



Part No. B96695

Complete Seed Meter (less seed plate)

- New meter has new style singulator and other improvements incorporated into 2003 planter production



Part No. 87411306E

Brush Kit

- Kit includes straight brush, curved brush and clips
- Convenience pack for one seed meter



Part No. B95586

Latch Kit

- Kit includes latch(3) and latch pin(3)
- Retains cover assembly to motor housing
- Housing pack



Part No. B95587

Lynch Pin Kit

- Retains seed plate
- Handy carded pack



Part No. B95588

Kits for 1200 Planters

Door Kit

- Kit includes seed door chute and lynch pin
- Handy service pack
- For 2002 and prior seed meters



Part No. B95589

Seed Meter Drive Kit

- Kit includes bearing drive assembly and pin
- Handy service pack
- For 2002 and prior meters



Part No. B95590

Singulator Spool Repair Kit

- Kit includes studs, spool singulator, compression spring and E-ring
- Handy service pack
- For 2002 and prior seed meters



Part No. B95592

Singulator Adjuster Kit

- Kit includes lever(s) and push mat(s)
- Handy service pack
- For 2002 and prior seed meters



Part No. B95591

Seed Disk Selection for 1200 Planters

Seed disks are required for operation. ORDER ONE SEED DISK PER PLANTER ROW. An 8 row planter requires 8 seed disks of the same attachment number to run properly.

Corn Disks

- 192995A1 Corn-sml, med, lrg, Popcorn-large, Sweet Corn-large 4855
- 275116A1 Corn, for in-row seed spacing greater than 11 inches. Large sunflower 2455
- 192993A1 Corn-extra small, Sweet Corn-med 4845
- 326781A1 Corn, sweet, small 4835

Cotton Disks (Acid Delinted)

Not for use with 8RN Planter Equipped with 1000 RPM PTO Pump Attachment Number 345793A.

- 447947A1 Cotton, singulated 8035
- 365249A3 Cotton, 3 seed hilldrop 20 x 3, 6030
- 232703A1 Cotton, singulated 8030
- 275114A1 Cotton, standard high residue 8035

Edible Bean Disks

- 193002A1 Kidney bean-large, cranberry, peanut-small 6060
- 192997A1 Navy bean small 8045
- Not for use with 8RN Planter equipped with 1000 RPM PTO Pump Attachment Number 345793A.**
- 232706A1 Pinto bean-sml, med (small peanut substitute) 6055

Peanut Disks

Not for use with 8RN Planter equipped with 1000 RPM PTO Pump Attachment Number 345793A.

- 327103A1 Peanut-med 4860
- 353801A1 Peanut, large Virginia 6065
- 193003A1 Peanut, large Virginia 4865

Popcorn Disks

- 328083A1 Popcorn, small 4830
- 326241A1 Popcorn, small/medium 4840

Soybean Disks

- 193017A1 Soybean 13045
- 377669A1 Soybean, for in-row spacing greater than 4 inches, 8045-SB
- 397839A1 Soybean, small 13035

Sugar beet Disks

- 326242A2 Sugar beet-small/medium pelletized 8020
- 232711A2 Sugar beet-large pelletized, sorghum/milo, for in-row seed spacing greater than 4.4 inches, 8023

Sorghum/Milo Disk

Not for use with 8RN Planter equipped with 1000 RPM PTO Pump Attachment Number 345793A.

- 232712A2 Sorghum/milo 12023

Sunflower Disks

- 326239A1 Sunflower, small 2423
- 326240A1 Sunflower, medium 2440
- 353553A1 Blank with seed hole locating groove.

Disk Assemblies

For Case IH Planters and Drills

Earth Metal Blade (14" x 3.5mm)

Earth Metal Blades wear up to 20% longer and are up to 60% tougher than conventional blades.

Wobble Reduction

New process reduces wobble for improved performance.

Machined Edge

Improved penetration in tilled and no till applications.



Disk Bearing

Gothic Arch Design with two point contact between balls and the races to give higher load rating and to reduce wobble. This design helps to extend bearing life and reduce opener disk wear. Standard-duty and heavy-duty available.

Heavy-duty Pressed Formed Hub

These hubs have reinforcing splines to prevent hub failures.

Planter and Grain Drill Disk Assemblies

Case IH and All-Makes Application

90850C92 - Standard-duty riveted-LH open disk assembly for planters, LH opener disk assembly for min-till drill, heavy-duty drill package for Case IH applications.

87715051 - Opener disk assembly - leading with heavy-duty bearing

B96090 - Bolted-LH

90851C92 - Standard-duty riveted-RH open disk assembly for planters, RH opener disk assembly for min-till drill, heavy-duty drill package for Case IH applications.

87715053 - Opener disk assembly - trailing with heavy-duty bearing

B96091 - Bolted-RH

141464C92 - Fertilizer opener disk assembly for planters for Case IH applications.

1277891C91 - Covering disk assembly for planters for Case IH applications.

603020R92 - Grain drill opener disk assembly for Case IH applications.

1344911C1 - Opener disk assembly with heavy-duty hub and bearings for Case IH applications.

Bearing Caps and Bolts are not included in assemblies.

Components							
	Disk	Bearing	Flange	Rivet	Bearing Cap	Bolt RH	Bolt LH
90850C92 (3.5 x 14)	1337971C1	1268017C91	90409C1	447-49	324180A1**	326-1028	28067R1
87715051 (3.5 x 14)	1337971C1	87715049	87715048	87668186	324180A1	86508732	87698796
90851C92 (3.5 x 14)	1337971C1	1268017C91	90409C1	447-49	324180A1**	326-1028	28067R1
87715053 (3.5 x 14)	1337971C1	87715049	87715048	87668186	324180A1	86508732	87698796
B96090* (3.5 x 14)	1337971C1	1268017C91	90409C1	NA	324180A1**	326-1028	2806714
B96091* (3.5 x 14)	1337971C1	1268017C91	90409C1	NA	324180A1**	326-1028	2806714
141464C92 (3 x 14)	492756R1	1268017C91	90409C1	447-49	324180A1**	492750R1	
1277891C91 (2 x 8)	1263938C1	1268017C91	149170C2	447-49	324180A1**	413-1028	413-1028
603020R92 (2 x 14)	603013R2	465004R91	602989R1	45-48	603012R1	603010R2	603011R2
1344911C1 (2 x 14)	*	1268017C91	149170C2	447-49	324180A1**	106-91020	1978957C1

* Bolted planter disk assemblies.
 ** Optional bearing cap part number 428549A1 is available. When using in no-till applications an adhesive is recommended.
 603013R2 is not Earth Metal.

Earth Metal Opener Disks and Earth Metal Disk Assemblies For Other Brands of Planters and Grain Drills

Part No.	Application	Size	Manufacturer P/N Reference Only	Bearing Cap
429998A1	Opener Disk Coulter Blade Only	355mm (14") x 4mm	Lilliston-Bushog-MF 427 500-07-253	
416443A1	Opener Disk Assembly	343mm (13.5") x 3mm	Lillison-Melrose 6603280/1	324180A1
416010A1 (Bearing Kit 435483A1)	Opener Disk Blade Only	381mm (15") x 3.5mm	Sunflower-Best 7176/DR800008	
416015A1 (Bearing Kit 435483A1)	Opener Disk Blade Only	330mm (13") x 3mm		
435483A1*	Bearing Kit (Bearing and Bolts)			
416442A1/B1980615C1	Opener Disk	343mm (13.5") x 3mm	Tye-Uft 540-647/012	324180A1
416015A1 (Bearing Kit 435483A1)	Opener Disk Blade Only	330mm (13") x 3mm	Marliss-Sukup-M&W 701010	
435483A1*	Bearing Kit (Bearing and Bolts)		702020	
416442A1/B1980615C1	Opener Disk Assembly	343mm (13.5") x 3mm	Krause 5250-484-OALH	324180A1
410526A1	Opener Disk Assembly	343mm (13.5") x 3mm	5250-484-OARH	324180A1
416442A1	Opener Disk Assembly L.H.	343mm (13.5") x 3mm	Crustbuster 863597LH	324180A1
416442A1	Opener Disk Assembly R.H.	343mm (13.5") x 3mm	863597RH	324180A1
B500276**	Opener Disk Assembly Lead	381mm (15") x 3mm	859090	324180A1
416443A1	Opener Disk Assembly Trail	343mm (13.5") x 3mm	863597	324180A1
416018A1 (Bearing Kit 435480A1)	Opener Disk Blade only Notch	406mm (16.1") x 4mm		
416017A1 (Bearing Kit 435480A1)	Opener Disk Blade only Plain	406mm (16.1") x 4mm		
435480A1*	Bearing Kit (2 Bearings and Bolts)		400580/401042	
141464C92	Opener Disk Assembly Fert.	343mm (13.5") x 3mm	John Deere AA27458	324180A1
419594A1*	Bearing Kit 750 No-Till		AA44267	
413344A1	Domed Double Disk Blade	343mm (13.5") x 2.5mm	N164594	
413345A1	Opener Disk Fer. Blade Only	406mm (16.1") x 5mm	A48720	
B500276**	Opener Disk Assembly (AA20242)	381mm (15") x 3mm	AA37474	324180A1
133480A1 (Bearing Kit 419594A1)	Opener Disk - J.D. 750/1850	460mm (18.1") x 5mm		
428354A1	Opener Disk Assembly - H.D.	381mm (15") x 3.5mm	Kinze GA8324	324180A1
B500276**	Opener Disk Assembly	381mm (15") x 3mm	GA2013	324180A1
416443A1/B1980616C1	Opener Disk Ass'y. New Flange	343mm (13.5") x 3mm	Great Plains 107-054S	324180A1
136617A1	Seed/Fertilizer Opener	406mm (16.1") x 3.5mm	AC71510363	

*Bearing Caps and Bolts are not included in assemblies.

Optional bearing cap part number 428549A1 available in lieu of steel cap part number 324180A1. When using in no-till applications. An adhesive is recommended.

Bearing Caps - steel

- Twelve steel dust caps (324180A1)
- For most opener disk assemblies for Case IH and other brands
- Handy service pack for shop or tool box



Part No. B96708

Bearing Caps - rubber

- Twelve rubber dust caps (428549A1)
- For most opener disk assemblies for Case IH and other brands
- Rubber dust caps are easy to install
- Handy service pack for shop or toolbox



Part No. B96709

IMPLEMENT PRODUCT SUPPORT KITS

Front Hitch Hose Carrier Conversion Kit



Features & Benefits

- Standard feature on 2005 and later planters
- Supports planter hoses & lines
- Improved reliability - few moving parts - lower maintenance cost
- Increased ground clearance by 8"
- Improved planter performance
- Higher planter value
- Installation instructions included with kit

Part No.	Description	Application
87505114	30 foot Conversion Kit	12R30 and 12/23 Pivot Transport Planters
87505274	40 foot Conversion Kit	16R30, 16/31, and 24R20 Pivot Transport Planters

Special Order Only

Down Pressure Spring Kit

- Simple - no tools required
- Single pin allow selection of three down pressure settings
- Adjust with planter in raised position
- Heavier parallel linkage - increased from 3/8" to 1/2"
- Interference with vacuum tube has been eliminated
- Stops no longer required with row unit mounted coulters
- Provides for an additional 1" lockup height clearance on extended rows
- Released for 2007 on 6 row-mounted, 16R30 stacker and 24R30 planters; released for total planter line for 2008
- One kit per row



Part No.	Description
87459131	14" Linkage Kit
87459135	20" Linkage Kit
87459136	24" Linkage Kit

For 2006 and prior planters the chain tensioner kit is required. Part no. 87298627 (6 row) and 87298628 (8 row). For large planters order multiple piece 6 or 8 row kits.

Special Order Only

Chain Tensioner Kit

- The chain tensioner is better protected from field debris. It is now located directly above the row unit frame
- The chain tensioner is not susceptible to binding
- Improved performance and reliability
- Easier to reach for maintenance on narrow row machines
- Easier replacement of chain tensioner with one bolt vs. two snap rings that were in a hard to reach location
- Speed compensator rolls are more reliable for longer life
- Speed compensator orientation is held more true for better chain tracking. The new compensator spindle has a large diameter base to hold the roller
- Fewer parts on both the chain tensioner and speed compensator

Part No. 87298627 (6 row kit)

Part No. 87298628 (8 row kit)

For large planters order multiple piece 6 or 8 row kits.



Seal and Bearing Kit for John Deere Drills

- New seal technology for the opener disk hubs on John Deere 750 and 1850 drills.
- Seal design requires less greasing—up to 250 hours. Field tested for 500 hours without greasing.
- Field proven technology on the Case IH SDX opener.
- Tough enough to seal the hubs on the Hummer.
- Seals and bearings are manufactured in America for superior performance and consistent quality.



▲
Case IH Seal/bearing
in John Deere drill
after 3000 acres



◀ Case IH SDX 30 with
new seal technology

John Deere
no-till drill



▶ Seal and bearing kit
Part No. 419594A1



Seal/bearing and
disk combo kit
Part No. B96148



Seal/Bearing and Disk Combo Kit

- Seal/Bearing Kit designed to offer superior performance in different seeding and soil conditions.
- 460mm (18.1") x 5mm (.197") Opener disk.
- Earth Metal for superior wear resistance and durability.
- Machined edges for improved penetration and durability.

Case IH offers a better solution to the seal and bearing problems on John Deere 750 and 1850 drills and all at competitive prices.

Bearing and Seal Kits for Heavy-duty Applications

Bearing/Seal Kit

- Application: 6 Bolt Heavy-duty Hub Assemblies 87428172, 87428171, B91353 and B95413
- Similar to bearing/seal kit 123096A2 but also includes improved seal plus wear sleeve, grass wrap guard and hardware



Part No. 87428169

Both seal and bearing kits include bearings, new "V" special seal, wear sleeves, hub cap, slotted nut, hardened washer and cotter pin.

Advantages of new seal design available on hub assemblies 87428170, 87428171, and 87428172 and bearing and seal kits 87428168 and 87428169.

New and improved seal design for the six-bolt regular duty, six bolt heavy-duty hub assemblies, and bearing and seal kits for these hub assemblies.

1. **Field-tested** in Kansas, South Dakota and Louisiana. New Case IH Grease Seal was exposed to all elements including: grass wrap, dust and mud. Seals were greased only once a season. Wheel hub showed no signs of contaminants.

2. **Lab tested**—seals were flushed with an aggressive coal mine dust and water together.

Standard Triple Lip was not lubricated and failed after 250 hours due to mass slurry ingress. **The New Case IH Grease Seal test completed after 500 hours and no lubrication was added to the hub.**

- Rollers were still completely packed with grease
- Grease covered the entire spindle
- No signs of any discolorization to the grease
- The new six-bolt light and heavy bearing kit will enhance the life of the bearing by keeping the dirt out and the grease in. The new enhanced grass wrap guard will also prevent wrapage from occurring.
- The new Case IH Grease Seal has less frictional force than a standard triple lip
- No grooving of the wear sleeve
- Longer bearing life with less lubrication

Bearing/Seal Kit

- Application: 6 Bolt Regular Duty Hub Assemblies 87428170 and B91354
- Similar to bearing/seal kit 63881C92 but also includes improved seal plus wear sleeve, grass wrap guard and hardware



Part No. 87428168

Case IH Harrow Heavy-duty Axle Kit

For 496/501/770/780/3900 Series Harrows

Upgrade your harrow axles for better than new performance! New 8 bolt wheels and heavy-duty hub assemblies, 2.75 inch spindles, triple lip hub seals with wear rings, and Timken taper roller bearing.

Install a complete axle assembly and get most items needed including...

- 1-Axle tube
- 2-Wheels
- 2-Hub assemblies with spindles
- 2-Valve stems

For wing and main axles. Tires not included.

Recommended tire size 11L or 12.5L x 15. Check machine for ply rating recommendations.

8 Bolt Hub Assembly Part No. 224225A1

For models 3950, 770, 780 harrows and other models updated with heavy-duty axle kit 223097A1. Complete with spindle, bearings, seals, hub caps and wheel bolts.

Bearing Kit Part No. B94340

Bearings and component to repair hub assembly Part No. 224225A1.

Harrow Axle Kit Number 223097A1

- Two (2) required for 501 and 770/780 Harrows
- Two (2) or four (4) required for 496 and 3900 Harrows

Wheel Hub Load Capacity Comparisons

- 8 Bolt Hub-6000 lbs.
- 6 Bolt Heavy-duty Hubs-4990 lbs.
- 6 Bolt Light-duty Hubs-3520 lbs.



Part No. 223097A1

Complete Wheel Hub and Spindle Assembly For Case IH Tillage Equipment

6 Bolt hub assembly comes complete with spindle, bearings, seals, hub caps and wheel bolts

Part No. 87428171

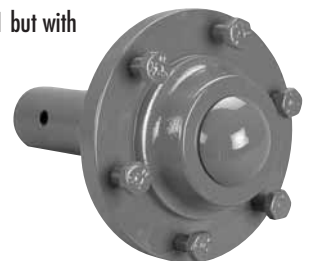
For many Case IH Chisel Plows, 496 (late models) and 3900 Harrows. Six Bolt Heavy-duty

Part No. 87428170

Harrow Models-470, 475, 480, 485, 490, 496, 501, 760 and 770. Six Bolt Regular Duty

Part No. 87428172

Similar to P/N 87428171 but with 13" long spindle.



Part No. 87428170 Shown

Disk Harrows

Harrow Bearing Kits

- Application: IH and Case IH tandem disk harrows
- Genuine Case IH components necessary to replace the bearing-complete with hardware

Four Kits Available

- Part No. B94716-Bearing Kit with ST491A bearing
- Part No. B94732-Bearing Kit with FD209RA bearing
- Part No. B94720-Bearing Kit with ST491A bearing and bearing guard
- Part No. B94717-Bearing Kit with FD209RA bearing and bearing guard
- Part No. B95450-Deluxe Bearing Kit for 3950 Cushion Gang harrow
- Part No. B95451-Bearing kit for 3950 cushion gang harrow



Part No. B94716



Part No. B95450



Part No. B94720



Part No. B95451

Harrow Bearing Kits

- Application: IH and Case IH offset harrows
- Genuine Case IH components necessary to replace the bearing-complete with hardware

Three Kits Available

- Part No. B95296-Bearing Kit with guard for 770 harrows
- Part No. B95297-Bearing Kit for 770 harrow
- Part No. B95344-Bearing Kit for 780 harrow.



Part No. B95296



Part No. B95297



Part No. B95344

Product Support Bearing Kit for Hub Assemblies

- Application: Hub assemblies 810087C2 and 591535R1 (Field cultivators, disk harrows, chisel plows)
- Kit includes all original equipment components
- Use kit for pre-season maintenance to promote uptime during the tillage and/or seeding season



Part No. B94351

Product Support Bearing Kit for Hub Assemblies

- Application: 8-Bolt hub assembly used in Kit 223097A1 and current production Case IH harrows
- Kit includes all original equipment components
- Handy kit for both pre-season and in-season use



Part No. B94340

Disk Harrow and Scraper Repair Kits

Harrow Scraper Blade Kit

- Kit includes two (2) scraper blades and rivets
- Replacement blade for scraper assemblies



Part No. B95859

Standard-duty Bearing Guard Kit

- Kit includes four (4) standard-duty guards and mounting hardware
- Guards are designed to protect bearing flange from wear



Part No. B96714

Heavy-duty Bearing Guard Kit

- Kit includes four (4) heavy-duty guards and mounting hardware
- Guards are designed to protect bearing flange from wear



Part No. B96715

Edge Care™ Disk Blade Sharpening Tool

- The Edge Care machine allows the farmer to return his blades back to their original edge sharpness
- Earth Metal® disks can be sharpened right on the disk gang. (Scrapers may have to be backed off to allow the gang to turn freely).
- Simple design allows quick and easy setup to the disk gang
- The Earth Metal blade is sharpened without reducing the diameter of the blade
- The unique Edge Care inside, ground-bevel profile actually improves the disk's cutting ability
- Trying to sharpen with standard, commercially available wheels will overheat and damage the edge
- The heart of the patented Edge Care System is the unique proprietary grinding wheel that allows the blade to be "cold sharpened"
- After the edge has been ground and sharpened, you can touch it with your fingers, proving the edge has not been overheated and weakened
- Edge Care operates on 110 volts, allowing it to be used in any farm shop

Part No.	Description
87299121	Edge Care Earth Metal Disk Blade Sharpening Tool

Edge Care is a registered trademark of North American Tillage Tools.



Field Cultivators and Chisel Plows

Cultivator Spring Assembly

- Applications: 45, 4300, 4500, 4600, 4700, 4800 and 4900 field cultivators
 - Heavy-duty springs with plugs installed
 - Part No. B94592-without hardware
 - Part No. B94593-with hardware (shown)
 - Genuine Case IH components
- (Use kit preseason maintenance to promote uptime during tillage season)



Part No. B94593



**Part No. B91346A
Shank Assembly**

Cultivator Shank Assembly

- Assemblies with or without springs
- Improved line of draft for more effective weed kill.
- Improved depth control for more effective chemical applications
- Upgrade overall value of the implement
- Reduce downtime required to adjust linkage
- Superior soil shattering with vibrating shank

Part Number Selection

Application	With Springs	Without Springs
4300 Field cultivators	178957A1A	B94127A
45-4500 Field cultivators	B100693A1A	8118689C91A
4600, 4700, 4800, and 4900 Field cultivators	B100691A1A	B91346A

Polyshank Protector Kits

- Application:
 - B95217 - Case shanks
 - B95218 - 1-3/4" shanks
- Kit includes 6 shank protectors and hardware
- Protects shanks and reduce trash collection on shank



Part No. B95217

Shank Bushing Kit

- Application: Case IH field cultivator shanks
- Kit includes 6 bushings and hardware
- Handy service pack



Part No. B95216

IMPLEMENT PRODUCT SUPPORT KITS

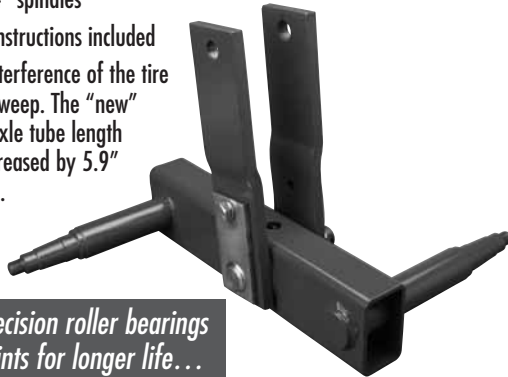
Bogie Axle Replacements

Bogie Axle Replacement

For Case IH Chisel Plows, Field Cultivators and 4200 Mulch Finishers

Standard Features

- Fully assembled-ready to weld in place
- Same as current production machines
- Heavy-duty assemblies have 2-1/8" spindles Light-duty assemblies have 1-3/4" spindles
- Installation instructions included
- Eliminates interference of the tire and shank/sweep. The "new" style bogie axle tube length has been increased by 5.9" on long units.



Includes precision roller bearings in pivot points for longer life... and improved axle tracking!

Twisted Shovels

- Applications: Case IH and most brands of chisel plows
- 3" x 1/2" x 22"
- 1/2" holes on 2-1/4" - 2-1/2" centers
- Use 1/2" plow bolts
- B95242-L.H.
- B95243-R.H.



Part No. B95242

Application	Long Light 187037A1	Long Heavy 187036A1	Short Heavy 187038A1
4200			●
4600* & 4800 wings, mains	●		
4700* & 4900 wings	●		
4700* & 4900 mains		●	
5600 wings	●		
5600 mains (single & double fold)		●	
5600 flat fold main	●		
5700 wings	●		
5700 mains (single & double fold)		●	
5700 flat fold main	●		

Single fold machines require up to four (4) kits.
Double fold machines require up to six (6) kits.

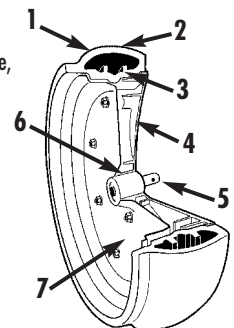
*-On later production models only.

Nylon/Steel Wheel Assemblies

- Patented nylon wheel half for extra strength and to help eliminate soil build-up in wheels.
- Patented tire designed to hold moist soil turned by the opener. Also, deep throat design will allow more trash to pass.
- Four part numbers
- Applications for: Case IH Planters and Drills; Deere and White Planters; early model Deere and Kinzie Planters; and Deere Drills and new style Kinzie Planters.

Case 4.5 x 16 Nylon/Steel Wheel Assembly (Part No. 225349A1)

1. Deep throat design holds moist soil turned up by the opener so it can be used to give seed a firm moist bed. Also lets trash through more easily.
2. Higher crown area helps prevent stubble damage while providing maximum flotation.
3. Internal supports keep tire from bottoming out under heavy load on sudden impact.
4. Patented nylon wheel half provides extra strength, longer life, and helps eliminate bulldozing and does not throw soil on to other rows.
5. Cross-drilled water pump bearing and bushing do not come loose, preventing wheel loss or damage.
6. Longer bearing support area of the patented nylon wheel reduces wheel wobble and adds life to bearing.
7. Steel wheel half allows necessary clearance for support arm and opener scraper bracket.



Sweeps



Part No. 380435A1

MAXXI-GRIP™ Sweep and Adapter

SIZE	PART NUMBER
8" x 6.5MM	380434A1
9" x 6.5MM	380435A1
10.5" x 6.5MM	380436A1
Adapter with gripper strips less hardware	400309A1

Adapters

Heavy-duty cast adapter with gripper strips to hold sweep firmly in place

Sweeps

- Made from 6.5MM (.256") alloy material for additional toughness and wear life
- Narrow stem for improved soil flow
- 1" wear tip and top plating for improved penetration
- 20% wider wings than our field proven Maxxi-width™ sweeps
- For most brands of cultivators.



Adapter with Hardware

- Six adapters and hardware
- For Maxxi-Grip sweeps
- Heavy-duty cast adapter with gripper strips



Part No. B96705

MAXXI-POINT™

PART NUMBER	SIZE
372560A1	7.3" x 1/4"
372561A1	9.3" x 1/4"
372562A1	11.3" x 1/4"

Sweeps

- New heavy-duty sweep
- Heavy-duty extended length nose with 1/2" wide wear point for improved penetration
- Made from 6.5MM (.256") alloy steel for increased toughness and wear life
- Constant width wing design
- For DMI and most other brand of cultivators



Part No. 372561A1

MAXXI-POINT PLUS™

PART NUMBER	SIZE
87460413	7.3" Sweep
87460414	9.3" Sweep
400309A1	Adapter with gripper strips less hardware

IMPLEMENT PRODUCT SUPPORT KITS

Air Till Drill Kits

Caster Wheel Bearing Kit

Application - Heavy-duty mainframes - 44+ foot drills

- All components to replace bearings in caster wheel
- Genuine Case IH components



Part No. B94632

Bearing Kit

Application - Air system drive line

- Cart maintenance kit promotes uptime service during seeding season
- Genuine Case IH components



Part No. B94629

Caster Wheel Bearing kit

Application - All wings and mainframes on drills under 44 foot

- All components to replace bearings in caster wheel
- Genuine Case IH components



Part No. B94631

Bearing Kit - Disk Levelers

Application - Disk Levelers - disk assembly 1030418

- Components necessary to replace bearing in disk assembly 1030418
- Handy package for tool box or farm shop



Part No. B94619 w/bolts

Cart Axle - Bearing Kit

Application - Carts 2000, 2300, 2400, 3400, 3503

- Genuine Case IH components
- Kit includes bearings, seals, cap and hardware



Part No. B94630

Flat Faced Packer Tire

The flat faced packer tire is preferred for its ability to leave the field exceptionally smooth. The flat faced packer tire option comes as a 6.50 x 15.

Pack the entire width of the ribbon or row. It sustains minimal stubble damage due to the thicker rubber on the flat face plus the 4-ply side.



**Part No. 290719A1 shown mounted.
Part No. 290719A1 includes tire only.**



Air Till Drill Kits

Product Support Kit for Hub Assembly 1015157

Application - Concord drills using hub 1015157

- Maintenance kit for Concord packer wheels
- Save time and money by having all components and hardware in one package



Part No. B94348A

Product Support Kit for Hub Assembly Application - Concord drills - 12" packer wheels; Concord spindle kit includes all original equipment components

- Save time and money by having all components and hardware included in one package
- Use kit for pre-season maintenance to promote uptime during seeding season



Part No. B94349

Plate Seal Assembly - Metering Rolls

Application - Concord air systems 1100, 2000, 2300, 2400, 3400, 3503



Part No. 1027945E

Metering Roll Seal Kit

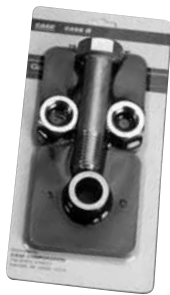
Application - Concord air systems 1100, 2000, 2300, 2400, 3400, 3503



Part No. 1030624E

Product Support Kit for Axle Pivot Application - Concord drill axle pivot

- Package includes all original equipment components
- Save time and money by having all components and hardware included in one package
- Use kit for pre-season maintenance to promote uptime during the seeding season



Card Pack (shown) Part No. B94350A
Bulk Pack (10 sets) Part No. 87297513

Seal Kit - Flow Control Plate

Application - Concord air systems 1100, 2000, 2300, 2400, 3503

- Kit includes two outer seals and one inner seal



Part No. B94618

Rub Pad Kit

Application - Concord air till drills walk beam assembly

- Nylatron for longer service life
- Recommended for abrasive soil conditions
- Includes two pads, Part No. 1026499



Part No. B94689

Rub Pad Kit

Application - Concord air till drills (10" and 12" drills) and narrow transport walking beam assembly

- Includes two pads, Part No. 1026129



Part No. B94688

IMPLEMENT PRODUCT SUPPORT KITS

Air Till Drill Kits

Rub Pad Kit

Application - Concord air drills (outer model drill)

- Includes four pads, Part No. 1023363



Part No. B94690

Bottom Wiper Kit - Product Meter

Application - Concord air systems bottom product meter

- Includes rubber wiper, support and hardware



Part No. B94615

Bottom Wiper Kit - Seed Meter

Application - Concord air systems bottom product meter

- Includes rubber wiper, strip and hardware

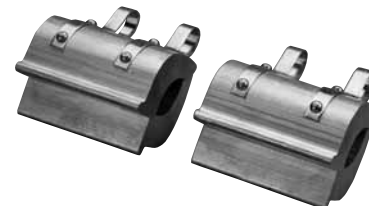


Part No. B94616

Depth Stop kits

Application - Concord air till drills (10" and 12" drills)

- 4" transport stops
- 2 of Part No. 1020439
- Handy packages for tool box or farm shops



Part No. B94607



Part No. B94611



Part No. B94608



Part No. 1025810E

Depth Stop Kits - Carded

Part No. 1027525E

Depth stop kit for wings. Includes:
1027526 - Black - outside
1027527 - Black - inside

Part No. B94606

Black - 1.125 inside wing
2 of Part No. 1027527

Part No. B94608 (shown)

Red .50"
2 of Part No. 1025805

Part No. B94609

Orange .62"
2 of Part No. 1025806

Part No. B94610

Yellow .75"
2 of Part No. 1025807

Part No. B94611 (shown)

Green 1.25"
2 of Part No. 1025808

Part No. B94612

Blue 1.44"
2 of Part No. 1029289

Part No. B94613

Silver 1.50"
2 of Part No. 1025089

Part No. B94614

Black 1.625"
2 of Part No. 1027526

Part No. 1025810E

6 stops (red, orange, yellow, green, blue and silver)

Air Till Drill Kits

Low Disturbance (L.D.) Seed Boot Assembly

Application - Concord air till drills

- Boot plus installed deflector
- Larger hardware for improved performance



Part No. 306731A1E

Lombardini Filter Maintenance Kit

Application - Concord air systems

- Kit contains fuel and oil filter



Part No. B94675

Deflector Kit - L.D. Seed Boot

Application - L.D. seed boot assembly

- Components to replace deflectors
- Handy package for tool box or farm shop



Part No. B94635

Bearing and Seal Kit

- SDX-30 drills
- Original equipment components
- Handy service pack



Part No. B96347

Deluxe Kit for SDX30 Drills

- Kit includes bearings, seals, Earth Metal 22.6" x 6.5mm disk, dust cap and hardware.
- Original equipment components.



Part No. B96348

Top Door Gasket Kit

Application - 1100, 2000, 2300, 2400, 3000, 3400, 3503 Concord air systems

- Gaskets and glue to repair seal on top door



Part No. B94628

L.D. Sweep Options

Part No.	Description
1032199	6" sweep
1027915	11" sweep
1033379	13" sweep



Part No. 1027915

IMPLEMENT PRODUCT SUPPORT KITS

TIGER POINTS - Get the Point

The patented 10 in. **tiger point**

Lift

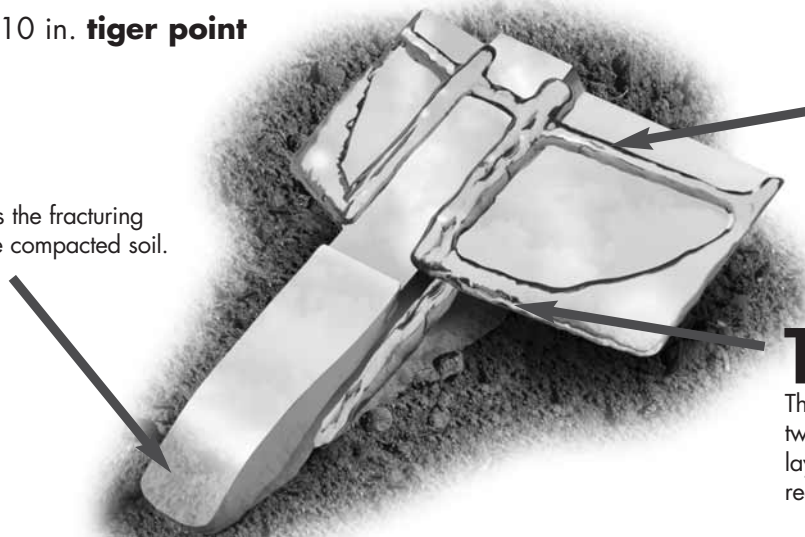
The tip starts the fracturing by lifting the compacted soil.

Roll

The back of the wings, together with the shank, finish the job by rolling the soil to incorporate fertilizer and residue.

Twist

The front area of the wings starts the twisting action, which relocates soil layers – preventing immediate recompaction.



10 in. (254 mm) standard tiger points

- 10 in. (254 mm) wing span
- Fracture 50%–70%
- Remaining residue 70%–85%
- 4–6 in. (102–152 mm) ridges
- Operating depth 8–16 in. (203–406 mm)
- Mounts with one horizontal bolt through 1-1/2 in. (38 mm) shanks
- **Part No. 87460072**



10 in. (254 mm) replaceable tip and wing tiger points

- 10 in. (254 mm) wing span
- Fracture 50%–70%
- Remaining residue 70%–85%
- 4–6 in. (102–152 mm) ridges
- Operating depth 8–16 in. (203–406 mm)
- Mounts with one horizontal bolt through 1-1/2 in. (38 mm) shanks
- **Part No. 87460159**



8 in. (203 mm) No-till points

- 8 in. (203 mm) wing span
- Fracture 25%–50%
- Remaining residue 70%–95%
- 0–2 in. (0–51 mm) ridges
- Operating depth 8–16 in. (203–406 mm)
- Mounts on No-till shank only
- **Part No. 87388006**



7 in. (178 mm) replaceable tip tiger points

- 7 in. (178 mm) wing span
- Fracture 30%–60%
- Remaining residue 70%–90%
- 2–4 in. (51–102 mm) ridges
- Operating depth 8–14 in. (203–356 mm)
- Mounts with one horizontal bolt through 1-1/4 in. (32 mm) shanks
- **Part No. 87460158**



7 in. (178 mm) tiger points

- 7 in. (178 mm) wing span
- Fracture 30%–60%
- Remaining residue 70%–90%
- 2–4 in. (51–102 mm) ridges
- Operating depth 8–14 in. (203–356 mm)
- Mounts with one horizontal bolt through 1-1/4 in. (32 mm) or 1-1/2 in. (38 mm) shanks
- **Part No. 87460070**



5 in. (127 mm) tiger points

- 5 in. (127 mm) wing span
- Fracture 30%–50%
- Remaining residue 70%–90%
- 2–4 in. (51–102 mm) ridges
- Operating depth 8–14 in. (203–356 mm)
- Mounts with one horizontal bolt through 1-1/4 in. (32 mm) shanks
- **Part No. 87460069**



tiger-C points

- 7 in. (178 mm) wing span
- Fracture 60%–80%
- Remaining residue 60%–75%
- 3–4 in. (76–102 mm) ridges
- Operating depth 6–12 in. (152 mm–305 mm)
- Mounts with two 1/2 in. (13 mm) bolts through 1-1/4 in. x 2 in. (32 x 51 mm) chisel shank
- **Part No. 33310060**

APPLICATION GUIDE

10 in. (254 mm) tiger points:

ecolo-tiger® 530/730, B-series & 9300

8 in. (203 mm) No-till points:

ecolo-til 2500, 2500 Ripstrip, 2500 Ripbed and **ecolo-tiger** 527B

5 in. (127 mm) and 7 in. (178 mm) tiger points:

parabolic shanks for chisel plows, **ecolo-tiger** 527/527B, MRX690 and all **ecolo-til**® units

tiger-C points:

6700/6750 and all types of chisel plows

Note: Field performance varies based on soil and operating conditions.

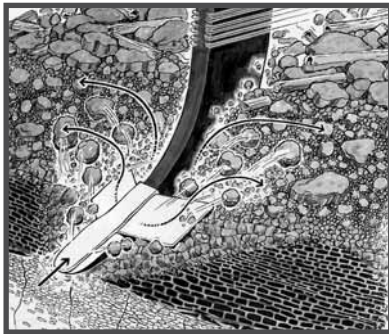
TIGER POINTS - Pointing the Way to Higher Yield Potential

The leading plant stress factor that reduces crop yield potential is soil compaction. Caused by many factors, including heavy rainfall and high traffic loads, soil compaction limits the soil's water-holding capacity and ability to break down nutrients for plant use.

Decades ago, a research and development team set out to create an effective tillage point to solve the problems of soil compaction. By tackling this challenge, we helped to create better soil tilth, which is the amount of pore space needed in the soil for good air/water exchange. Good soil tilth is key to higher crop yields.

The optimum tillage point design did not emerge immediately. The first experimental points had wings with horizontal leading edges that would gently lift the soil, but would not aggressively fracture the compaction. Even a three-inch rain would recompact many soil types after they were tilled.

Through continued primary tillage research, we developed the current **tiger point** design with wings that are swept downward, rearward and outward. This revolutionary design created a lifting and twisting action that shattered compacted soils in both wet and dry conditions. These **tiger point** wings do more than just cut a slot in the compaction layer. They create a turbulent action below the soil surface that aggressively fractures compaction between the shanks and relocates soil particles, creating a more open, mellow, healthier soil with excellent soil tilth.



Case IH **tiger points** shatter compaction, creating good soil tilth with aerobic activity that maximizes water and root infiltration, reduces ponding, minimizes runoff and soil erosion, and maximizes subsoil moisture. These factors help to create a more open, mellow, healthier soil for greater yield/profit potential.

Case IH **tiger points** shatter all types of compaction – plow pan, heavy equipment traffic and hydraulic compaction – and create air pockets, or pores, in the soil that maximize air and water penetration, minimize runoff, reduce ponding and maximize subsoil moisture. This process creates a root environment which reduces plant stress and maximizes the potential for higher yields.

AS SHOWN BELOW, COMPACTED SOIL DOESN'T HAVE PORE SPACE FOR AIR AND WATER.

Deep compaction between 6 in. (152 mm) and 12 in. (305 mm) deep is normally referred to as "plow pan" or "hard pan." Intermediate compaction at 3 to 6 in. (76 to 152 mm) deep is caused by heavy equipment traffic such as combines, trucks and grain carts. Surface compaction at 0 to 3 in. (0 to 152 mm) deep is caused by rainfall and hydraulic effects.

WITH STRAIGHT POINTS AT 30 IN. (762 mm) SPACINGS THAT RUN 16 IN. (406 mm) DEEP, SLOTTING OCCURS (EVEN IN DRY SOIL).

When straight, wingless points are run 16 in. (406 mm) deep on 30 in. (762 mm) centers, fracture and soil relocation is minimal and slotting occurs. At the bottom of the shank path, there is only slight, outward fracturing of the compaction layer.

Case IH tiger points RUN PROPERLY WITH THE TIP 1 IN. (26 mm) TO 2 IN. (51 mm) BELOW THE DEEP COMPACTION LAYER.

Normal fracturing with a tiger point "fans out" at 45° and peaks in the middle between shanks as shown above. Compaction is aggressively shattered between the shanks to maximize soil tilth and yield potential.



Part No. 87415563

Bearing/Seal Kit


- New kit for eco-tiger coupler hub—part number 87415563
- Complete kit to include Timken bearings, wear sleeve, special "V" seal and hardware
- New "V" seal design extends greasing requirements from 50 to 250 hours.
- The New "V" seal design has proven to keep out contaminants, reduce the lubrication cycle and extend bearing life
- Over 250,000 market potential

IMPLEMENT PRODUCT SUPPORT KITS

Index

012	306731A1E	5250-484-OALH	90851C92	B95204
1015157	319361A1	540-647	A48720	B95205
1020439	319362A1	591535R1	AA27458	B95216
1023363	319363A1	602989R1	AA37474	B95217
1025089	324180A1	603010R2	AA44267	B95218
1025805	326-1028	603011R2	AC71510363	B95225
1025806	326239A1	603012R1	B100691A1A	B95242
1025807	326240A1	603013R2	B100693A1A	B95243
1025808	326241A1	603020R92	B1980615C1	B95269
1025810E	326242A2	63881C92	B1980616C1	B95270
1026129	326781A1	6603280	B500276	B95271
1026499	326924A2E	701010	B91346A	B95272
1027525E	327103A1	702020	B91353	B95273
1027526	328083A1	7176	B91354	B95274
1027527	33310060	810087C2	B94127A	B95296
1027915	345793A	8118689C91A	B94340	B95297
1027945E	353553A1	843364C92B	B94348A	B95333
1029289	353801A1	843364C92C	B94349	B95344
1030418	365249A3	859090	B94350A	B95369
1030624E	372560A1	863597LH	B94351	B95381
1032199	372561A1	863597RH	B94352	B95395
1033379	372562A1	86508732	B94353	B95413
106-91020	377669A1	86994218E	B94592	B95450
107-0545	380434A1	87297513	B94593	B95451
123096A2	380435A1	87298627	B94595	B95586
1263938C1	380436A1	87298628	B94606	B95587
1268017C91	397839A1	87299121	B94607	B95588
1277891C91	400309A1	87388006	B94608	B95589
133480A1	400580	87411306E	B94609	B95590
1337971C1	401042	87415563	B94610	B95591
136617A1	410526A1	87428168	B94611	B95592
1344911C1	413-1028	87428169	B94612	B95859
141464C92	413344A1	87428170	B94613	B96090
145156C91E	413345A1	87428171	B94614	B96091
149170C2	413842A1	87428172	B94615	B96148
178957A1A	413842A1E	87459131	B94616	B96347
192993A1	416010A1	87459135	B94618	B96348
192995A1	416015A1	87459136	B94619	B96480
192997A1	416017A1	87460069	B94628	B96489
193002A1	416018A1	87460070	B94629	B96640
193003A1	416442A1	87460072	B94630	B96694
193017A1	416443A1	87460158	B94631	B96695
1978957C1	419594A1	87460159	B94632	B96705
223097A1	428354A1	87460413	B94635	B96708
224225A1	428549A1	87460414	B94675	B96709
225349A1	429998A1	87505114	B94688	B96714
232703A1	435480A1	87505274	B94689	B96715
232706A1	435483A1	87668186	B94690	DR800008
232711A2	447-49	87698796	B94716	GA2013
232712A2	447947A1	87715048	B94717	GA8324
275114A1	45-48	87715049	B94720	N164594
275116A1	465004R91	87715051	B94732	
2806714	492750R1	87715053	B94735	
28067R1	492756R1	90409C1	B94740	
290719A1	500-07-253	90850C92	B94741	



 SAFETY NEVER HURTS!TM Always read the Operator's Manual before operating any equipment. Inspect equipment before using it, and be sure it is operating properly. Follow the product safety signs, and use any safety features provided.

Case IH is a registered trademark of CNH America LLC. Any trademarks referred to herein, in association with goods and/or services of companies other than CNH America LLC, are the property of those respective companies.

CNH America LLC reserves the right to make improvements in design and changes in specifications at any time without notice and without incurring any obligation to install them on units previously sold. Specifications, descriptions and illustrative material herein are as accurate as known at time of publication, but are subject to change without notice. Availability of some models and equipment builds varies according to the country in which the equipment is used.