



## CASE IH QUICK HITCHES

*Make your life just a little bit easier and a lot more productive!*



A simple solution for attaching your 3 point implements.

Category I through IV



Category II through Category III  
Extra-duty Hitches

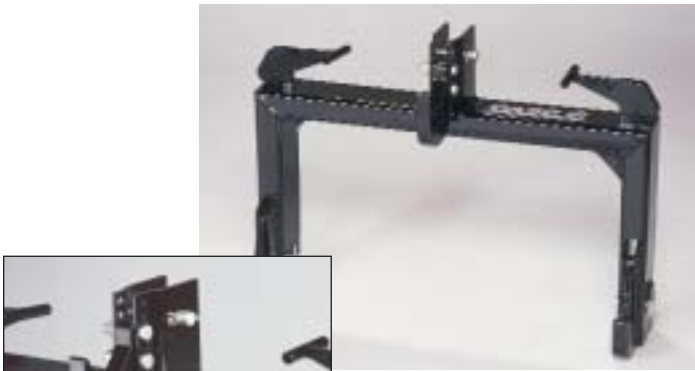


Easy to attach...easy to release.

## Standard-duty Hitches

*For Case IH and other brands of tractors and implements*

### 1. Category I Tractor to Category I Implement



Adjustable mast required for many import tractors.  
**Part no. B91364 red /**  
**Part no. B92470 black**

### 2. Category II Tractor to Category II Implement



**Part no. B91365 red / Part no. B92471 black**

### 3. Category III Tractor to Category III Implement



Non-rotating upper pin.  
**Part no. B91368 red / Part no. B92474 black**

### 4. Category IV Tractor to Category IV Implement



**Part no. B93064 red / Part no. B93065 black**

## Extra-duty Hitches

*For demanding applications*

### 1. Category III Tractor attaching pins with Category II width and height on both tractor and implement side



Non-rotating upper pin. Allows attachment of Category III tractor to Category II implements.  
**Part no. B91366 red / Part no. B92472 black**

### 2. Category III-N with Category III mast height and Category II width



Non-rotating upper pin. Allows attachment of Category II tractor to Category II implements.  
**Part no. B91367 red / Part no. B92473 black**

## Extra-duty Hitches (cont.)

For demanding applications

### 3. Category II adjustable to Category III Implement



Allows attachment of Category III tractor to Category II/III implements. Converts from Category II to Category III by repositioning the bolted side arms.

Part no. B500790 red / Part no. B92477 black

### 4. Category III or Category II Tractor



Side pockets allow for Category II or Category III tractor to attach Category III implements.

Part no. B91601 red / Part no. B92476 black  
Bushings are included for Category II tractor.

### 5. "Claw Hitch" Extra Strength - Category III Tractor to Category III Implements



- Upper link hook is welded to cross tube for extra strength.
- Tractor attaching pin area is larger and heavier than standard hitch.



- Steel reinforced side arm
- Steel reinforced lower hooks

Part no. B91699 red /  
Part no. B92475 black

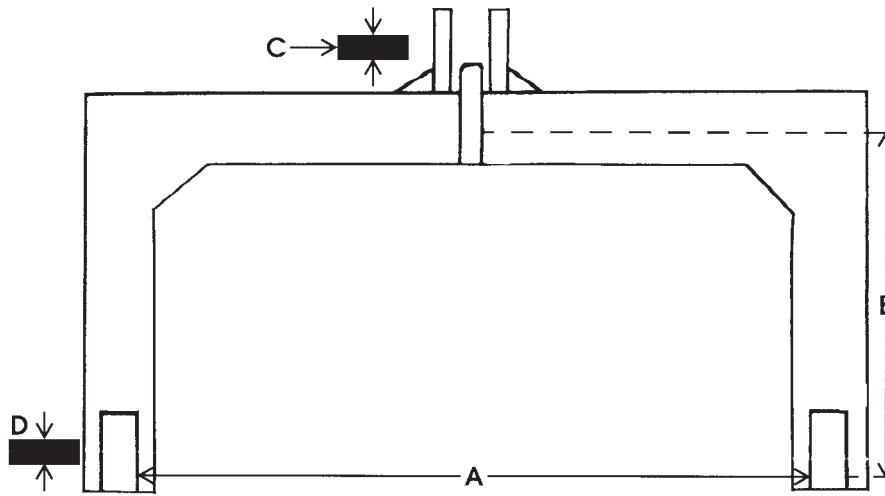
**WE HAVE A FULL LINE  
OF PINS, BUSHINGS,  
AND ADAPTERS**



## Case IH Quick Hitch Special Features

- Standard or extra-heavy construction to ASAE specifications
- Painted red or black
- Quick release over center handles.
- Hardened alloy, zinc plated attaching pins.





- A. Lower socket inside span**
- B. Bottom of top hook to bottom of lower hooks**
- C. Top link pin size**
- D. Lower link pin size  
(approximate dimension)**

## SPECIFICATIONS

Black Paint Part No.	Red Paint Part No.	A	B	C	D	Tractor	Implement	Description	H.P.	WT.
B92470	B91364	27-1/8"	Adjustable	3/4"	7/8"	I	II	Adjustable - Category I	60	69
B92471	B91365	32-3/4"	14-7/8"	1"	1-1/8"	II	II	Standard - Category II	150	125
B92474	B91368	38-1/4"	18-7/8"	1-1/4"	1-7/16"	III	III	Standard - Category III	190	180
B92473	B91367	32-3/4"	18-7/8"	1-1/4"	1-1/8" / 1-7/16"	III	III-N	Category III Narrow	190	175
B92476	B91601	38-1/4"	18-7/8"	1" / 1-1/4"	1-7/16"	II or III	III	II or III Tractor	190	189
B92472	B91366	32-3/4"	14-7/8"	1-1/4"	1-7/16"	III	II	Category II with Category III Pin	180	154
B92477	B500790	32-3/4" or 38-1/4"	14-7/8" or 18-7/8"	1-1/4"	1-7/16"	III	II or III	Convertible	190	200
B92475	B91699	38-1/4"	18-7/8"	1-1/4"	1-7/16"	III	III	Category III Claw	225	200
B93065	B93064	46-1/8"	27"	1-3/4"	2"	IV	IV	Standard Category IV	300	300
B94158	B94159	32-3/4"	18-7/8"	1"	1-1/8"	II	III-N	Category II - tall	150	173
B95053	N/A	32-3/4"	14-7/8"	1-1/4"	1-7/16"	II	II	Front Hitch MX, MXM	150	150

SEE YOUR LOCAL CASE IH DEALER

