

Sold and Serviced By:

FOR THE LATEST PRODUCT INFORMATION,  
STOP BY YOUR LOCAL CASE IH DEALER  
OR VISIT: MYCNHISTORE.COM



# TILLAGE PRODUCT SUPPORT

CULTIVATORS • DISK HARROWS • VERTICAL TILLAGE • DEEP TILLAGE • CHISEL PLOW  
SWEEPS • MOLDBOARD PLOWS • FERTILIZERS • COULTERS • COMPLETE HUBS  
PLOW BOLTS • REMAN



PM-21199 Issued 1/2022 Replaces: PM-20107

©2022 CNH Industrial America LLC. All rights reserved. Case IH is a trademark registered in the United States and many other countries, owned by or licensed to CNH Industrial N.V., its subsidiaries or affiliates. CNH Industrial Genuine Parts is a trademark in the United States and many other countries, owned by or licensed to CNH Industrial N.V., its subsidiaries or affiliates. Any trademarks referred to herein, in association with goods and/or services of companies other than CNH Industrial America LLC, are the property of those respective companies. [www.caseih.com](http://www.caseih.com)

2021 EDITION



# BUILD THE FOUNDATION FOR MAXIMUM YIELD POTENTIAL WITH EARTH METAL<sup>®</sup> DISK BLADES AND SWEEPS.



Set the stage for higher yields—with the strength and durability of Case IH Earth Metal disk blades and sweeps. With tough, flexible proprietary-steel construction—based on years of in-depth research on tillage and planting agronomics—these disk blades handle even the toughest residue. Thorough testing ensures superior durability and long life—saving you unnecessary downtime. And, with one of the largest selections in the industry, there’s an Earth Metal blade or sweep for every equipment brand and application.

Visit your Case IH dealer to view the entire Earth Metal line today.



Multiple horizontal lines for taking notes.



©2021 CNH Industrial America LLC. All rights reserved. Case IH is a trademark registered in the United States and many other countries, owned by or licensed to CNH Industrial N.V., its subsidiaries or affiliates. CNH Industrial Genuine Parts is a trademark in the United States and many other countries, owned by or licensed to CNH Industrial N.V., its subsidiaries or affiliates. Any trademarks referred to herein, in association with goods and/or services of companies other than CNH Industrial America LLC, are the property of those respective companies. www.caseih.com

Lined area for notes.



# EVERY PLANT. EVERY ROW. EVERY ACRE.

## SOIL TILTH & PREPARING THE SEEDBED.

This catalog addresses water management, good soil tilth, soil health and stand management, all with improved yield in mind.

Depending on soil type, you may need to fracture compaction. Using Tiger Points to fracture compaction will create a wide path for future root systems and lead to improved water management through improved tilth. The Lift, Twist and Roll action created by Tiger Points will bring some nutrients back up within the top 4 inches of soil to benefit new root systems.

Soil management begins during harvest, at the back-end of the combine. Residue should be spread as wide as the header to ensure an even distribution across the field and consistent consumption by microbes in soil.

Earth Metal ground engaging products are well known for durable, consistent performance. Barracuda and VT Wave disks are engineered with a serrated edge for cutting high-lignin GMO residue, exposing more surface area to microbes. Many other Earth Metal disks are available for other soil and residue conditions.

When Spring rains allow only sporadic hours to prepare seedbeds, count on Earth Metal sweeps to make every minute in your fields count, creating a seedbed for high-speed planting.

We have a long and strong history of tillage products designed and engineered to create a healthy growing substrate for our customers.

<b>Earth Metal</b> . . . . .	04	<b>Deep Tillage</b> . . . . .	44
<b>Cultivators – Sweeps</b> . . . . .	06	<b>Shovels and Points</b> . . . . .	48
<b>Cultivators – Shanks</b> . . . . .	11	<b>Chisel Plow Sweeps</b> . . . . .	50
<b>Disk Harrows – Kits</b> . . . . .	13	<b>Moldboard Plows</b> . . . . .	52
<b>Disk Harrows – Disk Blades</b> . . . . .	15	<b>Fertilizer</b> . . . . .	54
<b>Disk Bearing</b> . . . . .	24	<b>Complete Hubs</b> . . . . .	56
<b>Vertical Tillage – Barracuda Blades</b> . . . . .	34	<b>Plow Bolts</b> . . . . .	58
<b>Vertical Tillage – VT Wave Blades</b> . . . . .	35	<b>Remanufactured Parts</b> . . . . .	59
<b>Vertical Tillage – All Makes</b> . . . . .	36	<b>Accessories &amp; Maintenance</b> . . . . .	61
<b>Coulters</b> . . . . .	38	<b>Index</b> . . . . .	62
<b>Deep Tillage – Tiger Points</b> . . . . .	40		



**PROVEN. PREFERRED. POWERFUL.**

Not all sweeps and disk blades are created equal. The stronger, sharper and longer-wearing they are, the fewer headaches in the field—and the fewer unnecessary drains on your profit. Less breakage and more efficient seedbed preparation and planting mean higher yields.

But what goes into a better sweep, opener or disk blade? The superior design of Case IH Earth Metal® ground-engaging components is based on years of in-depth research on tillage and planting agronomics—the science behind maximum yields.

The resulting product is tougher, longer-lasting and significantly more durable in the face of harsh field and crop conditions.



*The Ball Test: A one-inch ball is forced through a half-inch hole to study how the metal responds to deformation and cracking. The length and shape of the resulting fractures are a key measure of a disk's ability to withstand field stress.*

**WATCH VIDEO**

Want to see how Earth Metal did compared to other blades in the ball test? Scan code:



PART NO.	PAGE NO.
DC211TTR21	30, 32
DC211TTR3	24, 25, 26, 29, 33
DC211TTR3E	30
DC211TTR4	24, 26, 27
DC214TTR2	24
DC214TTR3	24, 26, 27
DS208TT12	25, 26, 27, 28, 30, 31, 32, 33
DS208TT12A	32
DS208TT13	25, 31, 32
DS208TT2A	26, 28, 29, 31
DS208TT5	24, 25, 26, 27, 28, 29, 31, 32, 33
DS208TT6	24, 25, 26, 28, 31, 33
DS208TT7	27, 30, 32, 33
DS208TT8	24, 26, 32, 33
DS208TTR6	31
DS208TTR8	24, 28, 29, 31, 32, 33
DS209TT2	25, 26, 27, 28, 31, 32, 33
DS209TT4	27, 30, 33
DS209TT6	26
DS209TT7	30
DS209TT8A	29
DS209TTR10	29
DS209TTR2	25, 28, 29, 31
DS209TTR4	27, 28, 29, 30, 32
DS209TTR5	26, 31, 32
DS209TTR6P	30
DS209TTR8	30, 31
DS210TT2	25, 26, 27, 28, 31, 32
DS210TT4	24
DS210TT5	30
DS210TTR2	24, 26, 27
DS210TTR4	29
DS210TTR5R	26
DS211TT3	25, 27, 28, 31
DS211TT4	26
DS211TT6	25, 27, 30, 32, 33
DS211TTR13	25, 28, 29, 31, 32
DS211TTR2	26, 28, 31, 33
DS211TTR23	30
DS211TTR3	24, 25, 26, 27, 28, 30, 31, 32, 33
DS211TTR9	29
DS214TTR3	27, 33

PART NO.	PAGE NO.
FD209RB	27, 28, 29, 30, 31, 33
FD209RK	28, 30, 32
FD209RM	29, 32, 33
FD211RE	25, 28, 30
FD211RJA	29, 33
FD211RM	25, 29, 31, 33
HPC100GP	29
MAG411D5921	17
MAG411D7988	17
NW-614A	56
NW-810A	56
P2024470	10, 58
P2024472	58
P2024474	10, 58
P2024481	58
P2024483	58
P2024490	58
P2024492	6, 7, 58
P2024494	6, 7, 58
P2024496	58
P2024498	58
P2024500	58
P2024502	58
P2024503	58
P2024504	48, 51, 58
P2024506	48, 51, 58
T54196	38
TP-351A	51

PART NO.	PAGE NO.	PART NO.	PAGE NO.	PART NO.	PAGE NO.	PART NO.	PAGE NO.
87024780	45	87443005	18	87618052	17	9907002	43
87298834	38	87443006	18	87618053	17	9907003	43
87299128	38	87443006RB	23	87618054	17	998827R1	17
87348187	57	87443007	21, 45	87618055	17	998861R2	17
87400930	36, 38	87443008	21, 45	87618056	15, 17	998861R2EW	23
87400935	38	87443009	21, 45	87618057	15, 17	998865R3	17
87400936	36, 38	87443010	21, 45	87618058	17	998866R3	17
87400937	36, 38	87457566	45	87618059	17	B100691A1	12
87400941	38	87457567	45	87618060	17	B100691A1A	12
87401019	21	87460069	43	87618061	17	B100691A1B	12
87412311	43	87460070	43	87618064	17	B100693A1A	12
87413628	38	87460071	43	87618065	17	B100693A1B	12
87415557	45	87460072	43	87618066	17	B91346	12
87415558	45	87460074	43	87618067	17	B91346A	12
87415559	45	87460075	43	87618068	17	B91346B	12
87415788	21	87460158	43	87618069	17	B93368	48
87428170	56	87460159	43	87618070	17	B93370	48
87428171	56	87460413	8	87618071	17	B94127B	12
87428172	56	87460413EW	9	87618074	17	B94340	14
87429148	17	87460414	8	87618075	17	B94351	14
87429533	57	87500715	51	87618082	18	B94716	13
87429536	57	87500716	51	87618083	18	B95242	48
87442973	18	87506241	51	87618084	18	B95243	48
87442974	18	87506242	51	87618085	18	B95296	13
87442979	18	87506243	51	87618086	18	B95297	13
87442980	18	87506280	51	87618087	18	B95344	13
87442981	18	87506281	51	87618088	18	B95450	14
87442982	18	87506282	51	87618089	18	B95451	14
87442983	18	87515418	51	87618090	18	B95859	14
87442984	18	87546271	49	87618093	18	B96715	14
87442985	18	87584040	38	87618094	18	CC-171A	57
87442986	18	87585196	18	87618095	18	CDS209TTR	30
87442991	18	87585197	18	87625317	51	CT511713	36
87442992	18	87585198	17	87686090	51	CT512008	36
87442993	18	87585199	17	87700394	44	CT512013	36
87442994	18	87585200	17	88350	45	CT512208	36
87442995	18	87585201	17	88576	46	DC208TT10	26, 28, 29, 30
87442996	18	87585202	18	88871	46	DC208TT2	26, 29
87442997	18	87585203	18	9026	51	DC208TT5	25, 26, 27, 28, 29, 31, 32, 33
87442998	18	87585810	17	90356584	8	DC208TT8	25, 29
87442999	18	87585811	17	956702R4	17	DC208TTR17	26, 29, 33
87443000	18	87589793	10	958243R4	17	DC210TT	29
87443001	18	87589822	51	963862R2	17	DC210TT2	24, 28, 32, 33
87443002	18	87589836	48	963863R2	17	DC211TT2	26, 29
87443003	18	87612754	18	963879R2	17	DC211TT3	24, 25, 26, 27, 28, 29, 31, 32
87443004	18, 45	87618050	17	963880R2	17	DC211TTR2	25, 26, 29
87443004RB	23	87618051	17	9686	51		

## WHAT GOES INTO BETTER DISK BLADES AND SWEEPS? A LOT.

Here's an inside look at the Earth Metal manufacturing and testing process.

- 1 Iron ore, limestone and coal to restrict contaminants such as copper, nickel, etc.; no steel scrap or alloying materials. Contaminants weaken the end product.
- 2 Oxygen furnace is used, not Electric Arc furnace. Electric Arc furnaces permit copper and nickel contaminants.
- 3 Heated to create the required Austenite structure, then simultaneous, not sequential, forming and very rapid quenching. Cooling 100 degrees Celsius per second to achieve pure tempered Martensite structure.
- 4 Earth Metal microscopic structure encapsulates sulfur, eliminating layers of sulfur, which are natural fracture points.
- 5 These steps achieve extreme strength for longer wear on the farm with ductility, flexibility to rebound back to original shape after hitting hard objects in fields. This means more productive time when required by you.
- 6 Material-handling robots assure quality control and consistency to form and cool simultaneously in seconds, every time.
- 7 These blanks then undergo further processing, including edging, notching, shaping and heat-treating.
- 8 They are then coated with high-gloss enamel, which is baked to a smooth, hard finish that improves surface appearance and provides rust protection. An inline oven draws each blade individually, which relieves internal stresses and improves ductility and quality.
- 9 Brinell or Rockwell tests measure hardness to ensure the disk blade is resistant to wear. The Ball test measures toughness by forcing a polished steel ball through the disk blade; the length and shape of the resulting fractures are measures of the disk blade's ability to resist cracking.
- 10 Disk blades are also tested for elasticity under load. This test applies pressure to the blade—the propensity of the blade to return to its original shape afterward is a measure of its ability to resist impact.

## ALL MAKES APPLICATION – WE'VE GOT A BLADE FOR THAT.

The Earth Metal line is one of the largest in the industry – with disk blade options for nearly every equipment brand and application. Below are just a few other brands Earth Metal can fit. See your Case IH dealer for specific models.

- John Deere
- Great Plains
- Kuhn-Krause
- Landoll
- Sunflower
- Tatu
- Wishek
- And many more!





### EARTH METAL® SWEEPS—MADE TO LAST

Available for nearly every cultivator and field condition, our patented, heavy-duty Earth Metal sweeps are made to last—with an agronomic design for superior strength and optimum wear patterns. The high-strength alloy steel and superior heat treatment of Earth Metal sweeps promote better scouring and longer wear life. Refer to our Field Cultivator Application Chart on page 9 to find the sweep that's right for your application.



#### Maxxi-Width Sweep

- Revolutionary Case IH Maxxi-Width sweep penetrates faster—and wears longer
- Constant-width wing design retains original cutting width during the wear life of the sweep
- “Double strength” wraparound stem withstands loads more than 2,500-lbs.
- Heavy-duty, 1", reinforced patented wear tip produces better penetration and protection
- Earth Metal alloy steel for long wear and improved toughness
- Uniform heat-treatment process provides longer wear
- Lower-angle pitch means less tip wear, less draft and more residue—perfect for today's conservation tilling
- 47° stem angle
- 1-3/4" centers—7/16" bolt holes

PART NO.	SIZE	THICKNESS
1547095C2	4.5 Full	1/4"
1547096C2	6.0 Full	1/4"
1547097C2	7.5 Full	1/4"
1547098C2	9.0 Full	1/4"
1547099C2	10.5 Full	1/4"
1547100C2	12.0 Full	1/4"
1547101C2	7.5 LWC	1/4"
1547102C2	7.5 RWC	1/4"
1547103C2	9.0 LWC	1/4"
1547104C2	9.0 RWC	1/4"

#### Recommended Hardware

KIT PART NO.	QUANTITY	DESCRIPTION
P2024492	50	7/16" × 1-1/2" plow bolt
	50	7/16" serrated flange nut
P2024494	50	7/16" × 1-3/4" plow bolt
	50	7/16" serrated flange nut

PART NO.	PAGE NO.	PART NO.	PAGE NO.	PART NO.	PAGE NO.	PART NO.	PAGE NO.
47444487	46	479009R2	10	60279C3	18	73343447	37, 39
47453859	55	479010R2	10	60279C3EW	23	73343450	37
47468696	45	479011R2	10	604858R3	17	73343451	38
47469552	46	479012R2	10	6078BB	10	73343638FI	37
47469624	46	48043954	45, 46	6079BC	10	73344152	34
47473651	55	48047835	42	6080BC	10	73344153	34
47544959	56	48048501	45	6081BC	10	73344154	34
47553048	46	48048505	34	6083BA	10	73344155	34
47571830	46	48048506	34	644011R5	17	73344156	34
47571831	46	48048507	34	64478C1	10	73344157	34
47584782	46	48048508	34	651197R1	18	73344158	34
47648677	45	48048509	34	73340223	56	73344167	35
47648699	45	48058575	42	73340224	56	73344168	35
47654438	35	48058596	42	73340226	44	73344169	35
47654439	35	481960R3	53	73340228	57	73344170	35
47654440	34, 35	481961R3	53	73340229	57	73344171	35
47654441	34, 35	481964R3	53	73340231	57	73344172	35
47654442	35	481965R3	53	73340375	36, 38	73344173	35
47654443	35	483682R1	53	73340658	44	73344416	37
476811R1	53	484687R2	53	73340659	44	790-1000	17
47708605	14	484688R2	53	73340662	44	790-1002	39
47721935	44	485927R3	53	73340669	45	810220C1	9
47749981	51	51435492	43	73340670	44	811799C3	49
47762399	14	51539960	11, 12	73341179FI	37	811868C91	12
47762401	14	543437R1	18	73341304	37	811889C1	49
47762405	14	543438R1	18	73341695	36, 38	812362C1	39
47762406	14	547188R2	49	73342886	17	812384C3	48
47779129	46	549986R2	18	73342938	17	812385C3	48
47781007	44	5785	51	73342940	17	84151573	45
47781010	44	5786	10	73342941	17	84180366	21, 45, 55
47818993	11	5787	48	73342946EW	23	84192889	18
47823295	11	58917C3	18	73342947EW	23	84235586	57
47827928	34	58917C3EW	23	73342950	38	84341519	49
47827932	34	58934C3	18, 45	73342951	38	84374420	55
47827933	34	58934C3EW	23	73342953EW	23	84380555	21, 55
47827934	34	594227R1	49	73342955EW	23	84380560	21, 55
47828897	42	594243R1	50	73342967EW	23	84383798	57
47839924	55	594545R1	48	73342969EW	23	84475733	55
47841858	11, 12	594546R1	48	73343422	38, 55	84494407	55
47850049	23	596623R1	49	73343414RB	23	84577505	46
47881495	10	601986R1	48	73343415RB	23	8503	51
47891984	34	602145R1	49	73343418RB	23	85700693	11
47891985	34	602594R1	48	73343419RB	23	86512015	45
479005R2	10	602595R3	48	73343420RB	23	86984447	55
479006R2	10	602595R3N	48	73343444	39	86990834	49
479007R2	10	60276C3	18	73343445	39	86990849	55
479008R2	10	60278C2	18	73343446	37, 39	87016560	46

PART NO.	PAGE NO.	PART NO.	PAGE NO.	PART NO.	PAGE NO.	PART NO.	PAGE NO.
101189C1	34	155617	37	28336R3	18	380434A1EW	9
101191C1	34	155619	37	28341R1	38	380435A1	7, 8
115950	46	16806045	46	28345R3	18	380435A1EW	9
121913A1	17	178957A1	12	28597R1	39	380436A1	7, 8
121914A1	17	178957A1A	12	29003JAA03	22	400309A1	7, 8
122567C1	38	178957A1B	12	29003JAAF1	22	403375A1	7, 8
129195A2	38	179318A1	53	29003JAAR1	22	407293R2	17
130384	49	179319A1	53	29003JAWF1	22	407298R3	17
130800A2	38	179320A1	53	29003JAWR1	22	407300R3	17
130868A2	18	179321A1	53	2900HRBA60	22	407428R2	17
133765A1	50	179349A1	53	294957A1	51	407429R3	17
133766A1	50	179350A1	53	31018R1	18	407431R4	17
133767A1	50	181605A1	18	31022R1	18	407431R4EW	23
133768A1	50	193054A1	48	31224R3	18	407434R4	17
133769A1	50	1995505C1	48	31224R3EW	23	407434R4EW	23
133770A1	50	1995506C1	48	31225R3	18	431542A1	38
134329C3	55	21460	51	31225R3EW	23	443622A1	55
1344516C1	38	21461	51	31332R2	17	443623A1	21, 55
14032409	46	223097A1	57	31356R2	17	443626A1	38, 55
140445A2	39	224225A1	57	31357R2	17	443627A1	38, 55
140447A2	38	248517A1	50	31399R1	38	443629A1	21
140450A2	38	248518A1	50	321165A2	38	443635A1	38, 45
141205C2	38	248519A1	50	33017584	11, 12	443637A1	38, 45
15040251	55	248520A1	50	33310060	43	443638A1	38, 55
15040252	55	248523A1	50	33310071	44	443639A1	17
1547095C2	6	248524A1	50	33310079	44	44920141	22
1547096C2	6	248525A1	50	33310080	44	44920144	22
1547097C2	6	248526A1	50	33605001	54	4497	10
1547097C2EW	9	25332BA	49	33607001	54	4498	10
1547098C2	6	25630601	55	33607002	54	4499	51
1547098C2EW	9	25630602	55	33607003	54	45163M	49
1547099C2	6	25630801	55	33607004	54	463235R2	53
1547100C2	6	25702BA	49	33607130	54	463236R2	53
1547101C2	6	25731501	55	33607135	54	463237R2	53
1547102C2	6	27600R3	18	339388A2	17	463238R2	53
1547103C2	6	27600R3EW	23	339389A2	17	463251R2	53
1547104C2	6	27601R3	18	34199024	55	463252R2	53
1547105C1	50	27601R3EW	23	34410032	55	463253R2	53
1547106C1	50	2804227R2	17	34410033	55	463254R2	53
1547107C1	50	2804228R3	17	34599015	55	464578R4	53
1547108C1	50	28063331	56	34599060	55	464579R4	53
1547109C1	50	28078350	56	372560A1	7	464582R2	53
1547110C1	50	28078372	57	372560A1EW	9	464583R2	53
1547180C1	10	28088801	56	372561A1	7	464590R2	53
1547181C1	10	28088802	56	372561A1EW	9	464591R2	53
1547182C1	10	28178300	56	372562A1	7	464719R4	53
1547183C1	10	28705006	45	380434A1	7, 8	467817R4	53

**Maxxi-Point Sweep**

- Heavy-duty sweep
- Manufactured from 6.5mm (.256") high-strength alloy steel for increased toughness and longer wear life; most competitors use 1/4" steel, which is 2.5% thinner
- Heavy-duty, extended-length nose with a 1/2" wide wear point for improved penetration
- Rounded inner wings for improved soil flow and reduced potential for tire damage
- Constant-width wing design retains original cutting width during the wear life of the sweep
- Higher hardness than conventional carbon steel sweeps promotes better scouring in wet conditions
- Designed for DMI cultivators and most other brands of field cultivators
- 48° stem angle
- 1-3/4" centers for 7/16" bolts

PART NO.	SIZE
372560A1	7-3/10" × 6.5mm (.256")
372561A1	9-3/10" × 6.5mm (.256")
372562A1	11-3/10" × 6.5mm (.256")

**Recommended Hardware**

KIT PART NO.	QUANTITY	DESCRIPTION
P2024492	50	7/16" × 1-1/2" plow bolt
	50	7/16" serrated flange nut
P2024494	50	7/16" × 1-3/4" plow bolt
	50	7/16" serrated flange nut



See page 58 for our convenient plow bolt kits.

**Maxxi-Grip Sweep**

- Made from 6.5mm steel—2.5% heavier than industry standard 1/4" steel for additional wear life
- Narrow stem to provide improved soil flow and better residue management
- Low crown design for reduced draft and improved residue management
- Full 1" patented wear tip and top plating for better penetration and reduced draft load
- Constant-width wing design to help maintain original cutting width during life of the sweep
- Uniform heat-treating for improved toughness and longer wear
- Sizes available: 7.5", 9" and 10.5" for Case IH and DMI field cultivators and most other brands



PART NO.	SIZE
380434A1	7-1/2" × 6.5mm
380435A1	9" × 6.5mm
380436A1	10-1/2" × 6.5mm

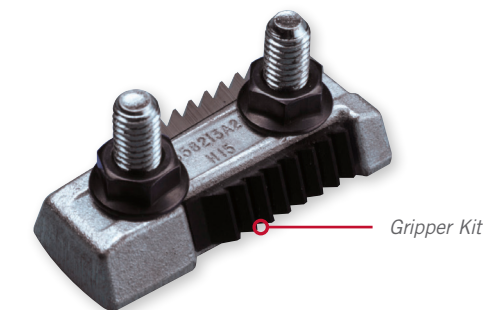
**Heavy-Duty Cast Adapter and Gripper Kit**

**Part No. 400309A1 – Heavy-Duty Cast Adapter**

- Heavy-duty casting for strength, durability and better tolerance control
- Neoprene gripper strips mounted on the adapter sides to hold sweep firmly in place
- Easy to install with hex head cap screws and lock nuts
- For shanks with 1-3/4" bolt hole center

**Part No. 403375A1 – Gripper Kit**

Includes 10 gripper strips



**Maxxi-Point Plus™ Sweep**

- Heavy-duty sweep and adapter
- Two-part system designed to reduce replacement time
- 6.5mm (.256") high-strength alloy steel for increased toughness and longer wear life
- Heavy-duty, extended-length nose with a 1/2" wide wear point for improved penetration
- Rounded inner wings for improved soil flow and less potential for tire damage
- Beveled edges for improved penetration and reduced draft load
- Constant-width wing design retains original cutting width during the wear life of the sweep
- Higher hardness than conventional carbon steel sweeps for better scouring in wet conditions
- The adapter features heavy-duty casting with neoprene gripper strips to hold sweep firmly in place

PART NO.	DESCRIPTION
87460413	7-3/10"
87460414	9-3/10"
400309A1	Adapter with gripper strips, less hardware
403375A1	Gripper strip kit (includes 10 gripper strips)



**Knock-On Sweep Installation Tool**

**Part No. 90356584**

To improve the securing of knock on a sweep during a field operation after replacement, the following steps should be considered:

- Provides an adequate contact surface to hammer the sweep into place on the wedge and prevent damaging the sweep tip from direct hammer contact
- After the sweep has a snug fit over the wedge from hand installation onto the wedge, install the tool clearance hole over the tip of sweep
- Hold the tool securely in place and contact the flat surface with a hammer until the neck of the sweep is in a minimum flush with the top of the wedge

PART NO.	DESCRIPTION
380434A1	Maxxi-Grip, 7.5"
380435A1	Maxxi-Grip, 9"
380436A1	Maxxi-Grip, 10.5"
87460413	Maxxi-Point Plus™, 7.3"
87460414	Maxxi-Point Plus™, 9.3"

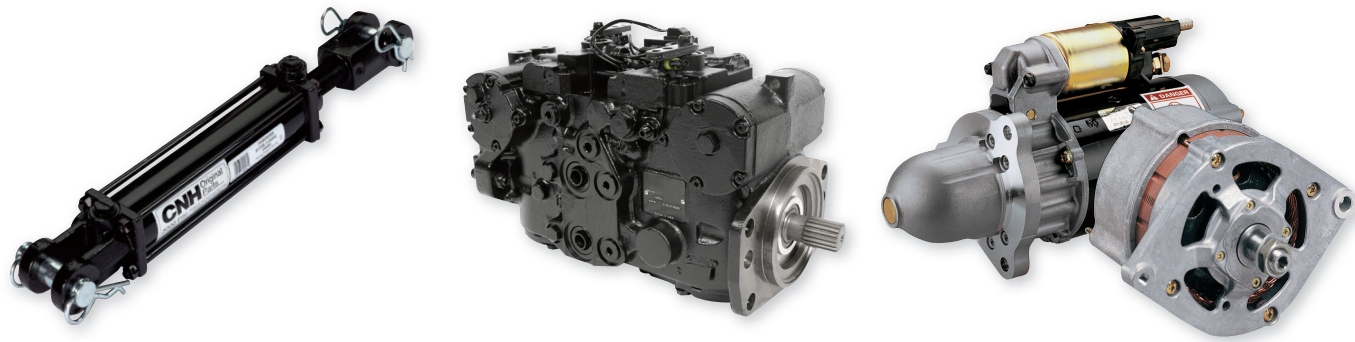


**ACCESSORIES & MAINTENANCE**

PRODUCT	PM NO.
AFS Precision Farming	PM-18308
Batteries	PM-20057
Harvesting Product Support	PM-18310
Hand Tool Product Guide	PM-18298
Hay Machine Product Support	PM-20059
Power Equipment Guide	PM-20084
Planting and Seeding Product Support	PM-20109
Shop Supplies & Safety	PM-18304
Sprayer Equipment	PM-18010
Twine & Net Wrap	PM-17608







WARRANTIES FOR CASE IH REMANUFACTURED PARTS

	DEALER INSTALLED WARRANTY*		CUSTOMER INSTALLED WARRANTY	
	MONTHS	PARTS	MONTHS	PARTS
<b>REMAN ENGINES/ENGINE COMP</b>				
Cylinder Heads, Camshafts, Crankshafts, Oil Coolers, Connecting Rods	12 months	Yes	12 months	No
Engines, Long Block, Replacement	24 months	Yes	24 months	No
Engines, Short Block	24 months	Yes	12 months	No
Water Pumps	24 months	Yes	12 months	No
Fuel Injection Pumps, Injectors	24 months	Yes	12 months	No
Turbochargers	24 months	Yes	12 months	No
<b>REMAN DRIVELINES</b>				
Axles, Clutches, Manual Transmission, Power Shifts, Power Shuttles	24 months	Yes	12 months	No
Torque Converters	24 months	Yes	12 months	No
<b>REMAN GEARBOXES</b>				
Rotor Drives	24 months	Yes	12 months	No
Torque Amplifiers	24 months	Yes	24 months	No
Wobble Boxes	24 months	Yes	12 months	No
<b>REMAN ELECTRICAL</b>				
Alternators, Controllers, ECUs, Instrument Clusters, Generators, Starters	24 months	Yes	12 months	No
<b>REMAN HYDRAULICS</b>				
Cylinders, Motors, Pumps, Valves	24 months	Yes	12 months	No
<b>REMAN OTHER COMPONENTS</b>				
A/C Compressors	24 months	Yes	12 months	No
ATS	24 months	Yes	12 months	No
Wheels	24 months	Yes	12 months	No
<b>REMAN REPAIR PROGRAMS</b>				
Wiring Harnesses	12 months	Yes	12 months	No
Electronic Components	18 months	Yes	18 months	No

\*When installed by an authorized Case IH dealer.

Field Cultivator Application Chart

Earth Metal® Heavy-duty Maxxi-Width™ and Maxxi-Point™ sweeps have 1-3/4" hole centers. Each series has a 7/16" bolt hole to accommodate cultivators with 7/16" holes. To accommodate field cultivators with 3/8" bolt holes, use adapter bolt, part number 810220C1 (7/16" head and 3/8" shaft).

MAKE/MODEL	HOLE SIZE	HOLE CENTERS	STEM ANGLE
Anderson	3/8"	1-3/4"	47°
Baker	7/16"	1-3/4"	47°
Bourgault	7/16"	1-3/4"	47°
Brady (prior to '70 - '71)	3/8"	1-3/4"	40°
Brady (after '70 - '71)	3/8"	1-3/4"	40°
Bush Hog	3/8"	1-3/4"	47°
Caulkins	3/8"	1-3/4"	47°
CASE, FC, FCM, FCSW	3/8"	1-3/4"	47°
Case IH and IH	7/16"	1-3/4"	47°
C.C.I.L.L.	3/8"	1-3/4"	47°
Cockshutt 285, 485	3/8"	1-3/4"	47°
Crustbuster	7/16"	1-3/4"	47°
Deere 1000 Series	3/8"	1-5/8"	43°
Deere 960	7/16"	1-3/4"	47°
Deere CCA, CC10, CC20	3/8"	1-3/4"	47°
Degelman 3000 Series	7/16"	1-3/4"	47°
DMI	7/16"	1-3/4"	47°
Ezee-On	1/2"	1-3/4"	47°
Flexi-Coil 200, 400	7/16"	1-3/4"	47°
Ford 208	3/8"	1-3/4"	47°
Frontier	7/16"	1-3/4"	47°



MAKE/MODEL	HOLE SIZE	HOLE CENTERS	STEM ANGLE
Glencoe, FC, MFC, FCSW	3/8"	1-3/4"	47°
Hesston	7/16"	1-3/4"	47°
Hiniker	7/16"	1-3/4"	47°
Kent	7/16"	1-3/4"	47°
Kewanee	3/8"	1-3/4"	47°
Krause	3/8"	1-3/4"	47°
Landoll	7/16"	1-3/4"	47°
Massey Ferguson 160	3/8"	1-3/4"	47°
Moline FT200	3/8"	1-3/4"	47°
Morris L240, L320	3/8"	1-3/4"	47°
Oliver 285,385,485	3/8"	1-3/4"	47°
Rhino/Athens	7/16"	1-3/4"	47°
Sunflower	7/16"	1-3/4"	47°
Taylor	3/8"	1-3/4"	47°
Wil-Rich	7/16"	1-3/4"	47°
Win Power 1500	7/16"	1-3/4"	47°
White Farm Equipment	3/8"	1-3/4"	47°

Extenda Wear™ Sweeps



PART NO.	DESCRIPTION
87460413EW	Maxxi-Point Plus – 7.3"
372560A1EW	Maxxi-Point – 7.3"
372561A1EW	Maxxi-Point – 9.3"
1547097C2EW	Maxxi-Width – 7.5"
1547098C2EW	Maxxi-Width – 9"
380434A1EW	Maxxi-Grip – 7.5"
380435A1EW	Maxxi-Grip – 9"

- Tungsten Carbide coating provides 2-3 times more wear life than standard Earth Metal sweeps
- Less downtime changing worn sweeps
- Less labor cost
- Improved yields from retaining original shape longer



NON-EARTH METAL MISCELLANEOUS SWEEPS

All-Purpose Sweeps

PART NO.	SIZE	THICKNESS	TYPE	ANGLE	HOLES	HOLE SPACING
479005R2	6"	3/16"	Full	57°	3	1"
479006R2	8"	3/16"	Full	57°	3	1"
479009R2	8"	3/16"	LH	57°	3	1"
479010R2	8"	3/16"	RH	57°	3	1"
479007R2	10"	3/16"	Full	57°	3	1"
479011R2	10"	3/16"	LH	57°	3	1"
479012R2	10"	3/16"	RH	57°	3	1"
479008R2	12"	3/16"	Full	57°	3	1"

Universal Economy Sweeps

PART NO.	SIZE	THICKNESS	ANGLE	HOLES	HOLE SPACING	BOLT SIZE
6083BA	4"	1/4"	55°	3	2-1/4"	7/16"
6078BB	6"	1/4"	55°	3	2-1/4"	7/16"
6079BC	8"	1/4"	55°	3	2-1/4"	7/16"
6080BC	10"	1/4"	55°	3	2-1/4"	7/16"
6081BC	12"	1/4"	55°	3	2-1/4"	7/16"

Field Cultivator Sweeps

PART NO.	SIZE	THICKNESS	ANGLE	HOLES	HOLE SPACING	BOLT SIZE
87589793	9"	1/4"	47°	2	1-3/4"	7/16"
4497	11"	1/4"	47°	2	1-3/4"	7/16"
5786 (Penetrator)	11"	1/4"	47°	2	1-3/4"	7/16"
4498	12"	1/4"	47°	2	1-3/4"	7/16"

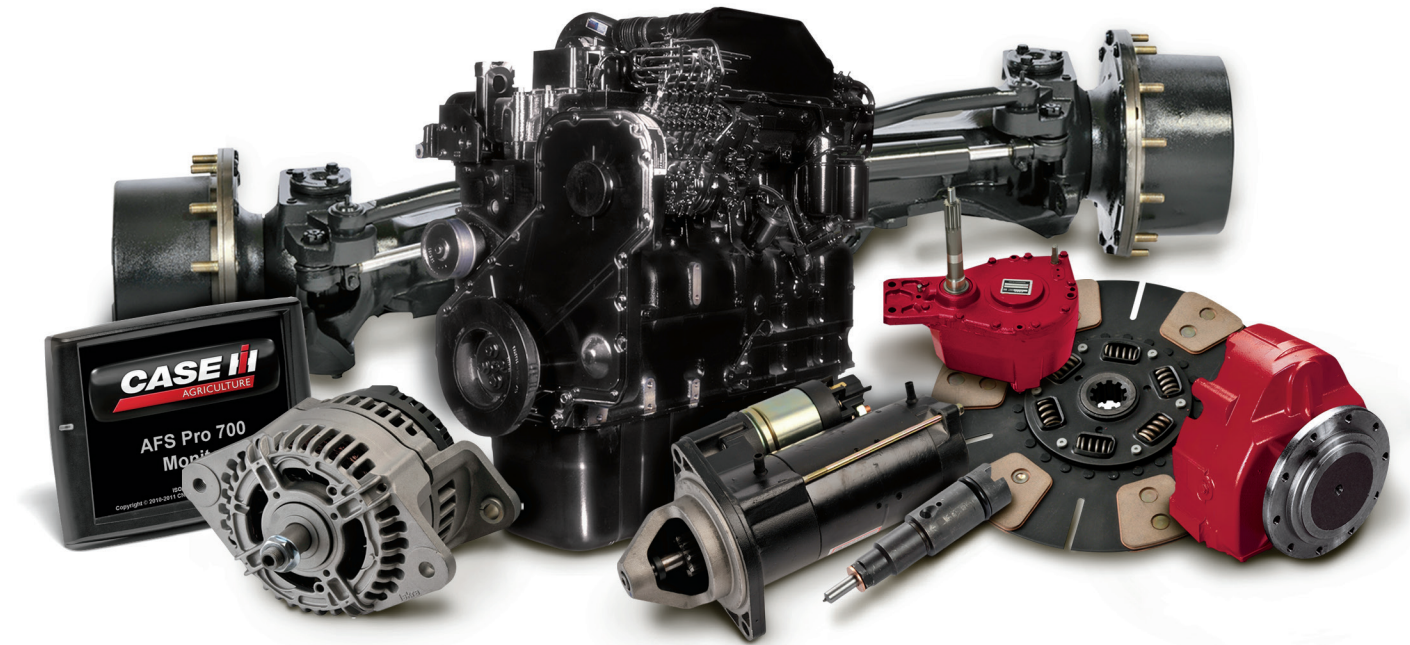
Danish Tine Sweeps

(1/4" Thickness)

PART NO.	SIZE
1547180C1	2-1/2" full
1547181C1	4-1/2" full
1547182C1	7" full
1547183C1	9" full
47881495	1-3/34" × 7-7/8" reversible
64478C1	1-3/8" × 8-5-16" reversible

Recommended Hardware

KIT PART NO.	DESCRIPTION
P2024470	50 counter-head plow bolts (3/8" × 1-1/2")
	50 serrated flange nuts (3/8")
P2024474	50 counter-head plow bolts (3/8" × 1-3/4")
	50 serrated flange nuts (3/8")



CASE IH REMANUFACTURED PARTS: MORE THAN REBUILDING

With Case IH remanufactured parts, cost- and time-efficiency meet demanding quality standards. These parts are remanufactured from their core—not rebuilt from the point of failure—and tested to even stricter standards than during their original manufacturing. As a result, you have access to a line of like-new parts at a reduced price with an industry leading warranty. Designed to install faster, drop-in assemblies minimize labor costs and maximize uptime.

BENEFITS OF CASE IH REMANUFACTURED PARTS

- **SIGNIFICANT SAVINGS:** Case IH remanufactured parts cost less than new parts—offering great value while ensuring peak performance.
- **MORE CHOICES:** Every day, we look to add even more parts to our already extensive roster of Case IH remanufactured parts. This expanded offering gives you more options for your equipment needs.
- **HIGHER VALUE:** When you install our parts in your equipment, you can expect increased resale value.
- **OEM PERFORMANCE:** Unlike “will-fit” parts, we engineer each Case IH remanufactured part to deliver the like-new performance that meets stringent Case IH performance specs.
- **LESS DOWNTIME WITH INSTALLATION OPTIONS:** Because many Case IH remanufactured parts are ready to install, our service technicians can spend less time completing repairs and service. The results? Quicker turnaround and a whole new level of equipment uptime.
- **PROMPT CREDIT FOR YOUR CORE:** Your local dealer is equipped to provide a thorough analysis of your core. Contact your local dealer to discuss current value and criteria for returning your core.
- **SUPERIOR WARRANTY PROTECTION:** Unlike no-name competitors or rebuilds, our parts come with full warranties—the same or better coverage we offer for new parts.
- **QUALITY:** We completely clean, disassemble, etc., then thoroughly inspect and reassemble Case IH remanufactured parts to the latest OEM specifications for uncompromising quality.





PLOW BOLTS

For convenience, the most popular plow bolts are available in packages that include bolts and serrated flange nuts for field cultivator sweeps, chisel plow shovels, Danish tine sweeps and many other tillage applications.

WHY CASE IH PLOW BOLTS?

- Hardware is coated in environmentally friendly trivalent chromium, eliminating the health and environmental concerns of previous hexavalent coatings
- Bolts are heat-treated to SAE J429 Grade-5 specifications

No. 3 Flat-Head Plow Bolts

	PART NO.	LENGTH	SETS PER BOX
3/8 – 16	P2024481	1-1/4"	50
	P2024483	1-1/2"	50
	P2024490	1-1/4"	50
	P2024492	1-1/2"	50
7/16 – 14	P2024494	1-3/4"	50
	P2024496	2"	50
	P2024498	2-1/4"	50
	P2024500	2-1/2"	50
1/2 – 13	P2024502	3"	25
	P2024503	2"	50
	P2024504	2-1/4"	50
	P2024506	2-1/2"	50

Contour-Head Plow Bolts

	PART NO.	LENGTH	SETS PER BOX
3/8 – 16	P2024470	1-1/2"	50
	P2024472	1-5/8"	50
	P2024474	1-3/4"	50



DURABILITY TO TAKE ON THE TOUGHEST CONDITIONS.

Even under ideal field conditions, higher operating speeds increase equipment wear and tear. Our beefed-up shank assembly design stands up to the challenge.

Force and Flexibility, Balanced.

The shank assembly design on the Tiger-Mate 255® not only provides the consistent, **flat subsurface floor** necessary for fast germination and even emergence but also helps you complete the task faster and more efficiently. Operating at higher speeds — up to **10 miles per hour** — means faster-changing conditions across the field. We balanced this beefier shank with a proportional increase in spring thickness, so it flexes prior to spring compression and provides a **20 percent increase in holding power**.

This **balanced flexing** helps maintain a consistent depth and keep sweeps parallel to the ground and on a level plane from nose to wing even through those compacted areas left by the combine or grain cart.



- A** Hardened, **dual greaseless pivot-point bushings** last longer and require less maintenance. Plus, dual bushings help ensure the pivot point doesn't gall and wear out, which could allow the shank to move laterally, creating an uneven subsurface floor.
- B** The **shank stop**, which initially positions the sweep parallel to the ground, is positioned for precise consistency and durability.  
**Part No. 47841858**
- C** The larger **main shank pivot bolt** holds tight to maintain consistent spring pressure for a level subsurface floor.  
**Part No. 85700693**
- D** Stronger **compression spring** holds sweep in place during work, while adding protection to the assembly during rocky conditions. Compared to a stretch spring, compression spring retains holding power throughout its life.  
**Part No. 47823295 – Compression Spring**
- E** The **shank channel guard** provides stability and even side-to-side loading for enhanced shank durability.  
**Part No. 47818993**
- F** The **shank** on the Tiger-Mate 255 is thicker (11/16 inch versus the previous 5/8 inch).  
**Part No. 51539960 – Shank – 11/16"**  
**Part No. 33017584 – Shank – 5/8"** (for Tiger-Mate 200)



**Cultivator Shank Assemblies**

- Available with springs (shown) or without
- Improved line of draft for more effective weed kill
- Improved depth control for more effective chemical incorporation
- Upgrade overall value of the implement
- Superior soil shattering with vibrating shank

*(Available in multiple package quantities according to the table below)*



**Available Shank Assemblies**

PART NO.	DESCRIPTION	FITS TUBE SIZE (WIDTH × HEIGHT)	PACKAGE QUANTITY	APPLICATION
B91346	Shank without spring	3" × 4"	1	4600, 4700, 4800, 4900 field cultivators
B91346A	Shank without spring	3" × 4"	10	4600, 4700, 4800, 4900 field cultivators
B91346B	Shank without spring	3" × 4"	50	4600, 4700, 4800, 4900 field cultivators
B100691A1	Above (B91346) shank with spring	3" × 4"	1	4600, 4700, 4800, 4900 field cultivators
B100691A1A	Above (B91346) shank with spring	3" × 4"	10	4600, 4700, 4800, 4900 field cultivators
B100691A1B	Above (B91346) shank with spring	3" × 4"	50	4600, 4700, 4800, 4900 field cultivators
811868C91	Shank without spring	2-1/2" × 2-1/2"	1	45-4500 field cultivators
B100693A1A	Above (811868C91) shank with spring	2-1/2" × 2-1/2"	10	45-4500 field cultivators
B100693A1B	Above (811868C91) shank with spring	2-1/2" × 2-1/2"	50	45-4500 field cultivators
B94127B	Shank without spring	4" × 4"	25	4300 field cultivators
178957A1	Above (B94127B) shank with spring	4" × 4"	1	4300 field cultivators
178957A1A	Above (B94127B) shank with spring	4" × 4"	10	4300 field cultivators
178957A1B	Above (B94127B) shank with spring	4" × 4"	25	4300 field cultivators
47841858	Spring pack assembly only, no shank	3" × 4"	1	TMII, TM200, TM255
33017584	Shank without Spring	3" × 4"	1	TMII, TM200
51539960	Shank without Spring	3" × 4"	1	TM255

PART NO.	DESCRIPTION	APPLICATION	BEARING KIT
87348187	6-bolt hub & spindle assembly	Tiger-Mate 200, P/T Crumbler, 330 Turbo	47781005
28078372	6-bolt hub & spindle assembly	NPX5300, NTX5310, 4300, 5300, 5310 and 930 Nutri-Placer	73340662
73340228	8-bolt hub & spindle assembly (2006 and earlier)	RMX340, True-Tandem 370, 530C, 730C	B94340 black cap, 73340227 red cap
73340229	8-bolt hub & spindle assembly (2007 and later)	RMX340, RMX370, True-Tandem 340 & 370 and 330 Turbo	B94340 black cap, 73340227 red cap
224225A1	8-bolt hub & spindle assembly	3950, 770, 780 harrows and other models updated with heavy-duty axle kit 223097A1	B94340 black cap, 73340227 red cap
84383798	8-bolt hub & spindle assembly	870 & 875 Ecolo Tiger, 330 Turbo, 335VT, 370 True-Tandem	N/A
87429533	8-bolt hub & spindle assembly	NTX5310, 5310, 950 Nutri-Till'R	N/A
87429536	8-bolt hub & spindle assembly	NTX5310, 5310, 950 Nutri-Till'R	N/A
84235586	8-bolt hub & spindle assembly	Tiger-Mate II, Tiger-Mate 200	N/A
CC-171A	8-bolt hub & spindle assembly	600, PTX 600 chisel plows	21312
223097A1	Walking Tandem uses hub 73340231	501, 770, 780, 496 and 3900	B94340 black cap, 73340227 red cap
73340231	8-bolt hub & spindle assembly	501, 770, 780, 496 and 3900	B94340 black cap, 73340227 red cap



**HUB ASSEMBLIES**

Choose from many different hub assembly kits available for multiple Case IH models. Kits include spindles, hubs and all internal components fully assembled.



PART NO.	DESCRIPTION	APPLICATION	BEARING KIT
47544959	4-bolt hub assembly	2500, 527, 527B 6700, 6750, Coultter Champ II, True-Tandem™ 345 & 375, 335VT, 330 Turbo	47781021
28063331	4-bolt hub & spindle assembly	2500, 527B, 530B, 730B, 330TT, NPX 5300, NPX2800, NTX5310, 3100, 3250, 4300, 5300 Nutri-Placer	N/A
NW-614A	6-bolt hub & spindle assembly	PTX300, PTX600 chisel plows, 27-, 31- and 34-foot models	6615 or 47586504
NW-810A	6-bolt hub & spindle assembly	PTX600 (37- and 40-foot models)	47942219
28178300	6-bolt hub assembly	2500, 527, 527B 6700, 6750, Coultter Champ II	73340662
73340223	6-bolt hub & spindle assembly	RMX340, RMX370, True-Tandem 340 & 370	73340222 with hardware, 123096A2 without hardware
73340224	6-bolt hub & spindle assembly (2007 and later)	RMX340, RMX370, True-Tandem 340 & 370 and 330 Turbo, ATX700, 700 hoes	73340222 with hardware, 123096A2 without hardware
28088801	6-bolt hub & spindle assembly	4100, 4200, 4300, 4250, 5250 Nutri-Placer, DMI Coultter Champ II	N/A
28088802	6-bolt hub & spindle assembly	4100, 4200 DMI applicators, DMI Coultter Champ II	N/A
87428172	6-bolt hub & spindle assembly	770, 780, 596 disk harrows, 5500 drills, 955 planters	123096A2 or 73340222 or 87428169
87428171	6-bolt hub & spindle assembly	485, 496, 501, 3900, 3950 disk harrows, 6800 ripper, 5400, 6100 drills	123096A2 or 73340222 or 87428169
87428170	6-bolt hub & spindle assembly	470, 475, 480, 485, 490, 496, 501, 596, 610, 760, 770 disk harrows	63881C92 or 87428168 with upgraded seal
28078350	6-bolt hub & spindle assembly	2500, Tiger-Mate II, Tiger-Mate 200, 160 PT Crumbler, P/T Crumbler, 370 True-Tandem, 330 Turbo, 335VT	73340662

**Tandem and Offset Harrows**

All tandem and disk harrow bearing kits include genuine Case IH components necessary to replace the bearing—complete with hardware. See your Case IH dealer for a complete line of OEM bearings and bearing kits.



**Disk Bearing Kits**

**Part No. B94716**

- Bearing kit with ST491A bearing
- Fits most Case IH disks

**Part No. B95296**

- Bearing kit with guard for 770 harrow

**Part No. B95297**

- Bearing kit for 770 harrow



**Part No. B95344**

- Bearing kit for 780 harrow



**Gang Bearing Kits**

**Part No. B95450**

- Deluxe bearing kit for 3950 cushion gang harrow

**Part No. B95451**

- Bearing kit for 3950 cushion gang harrow



**Harrow Scraper Blade Kit**

**Part No. B95859**

- Kit includes two scraper blades and rivets
- Replacement blade for scraper assemblies



**Product Support Bearing Kits for Hub Assemblies**

**Part No. B94340**

**Application:** 8-bolt hub assembly used in kit 223097A1 and current production Case IH harrows

**Part No. B94351**

**Application:** Hub assemblies 810087C2 and 591535R1 (field cultivators, disk harrows, chisel plows)



Part No. B94351

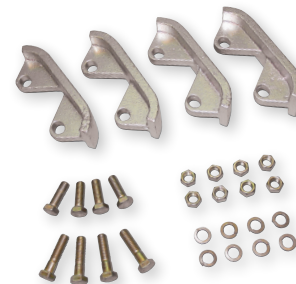


Part No. B94340

**Heavy-Duty Bearing Guard Kit**

**Part No. B96715**

- Kit includes four heavy-duty guards and mounting hardware
- Guards are designed to protect bearing flange from wear
- Fits most Case IH disks



**Heavy-Duty Eyebolt Kits**

Kits contain heavy-duty eyebolts, brackets and hardware for increased durability.

APPLICATION	R.H.	L.H.
True-Tandem 330 Vertical Tillage Tool Kit	47708605	47708605
True-Tandem 340	47762399	47762401
True-Tandem 370	47762406	47762405



MyCHNiStore.com

**EARTH METAL® FERTILIZER COULTERS**



The leading and sealing coulters on Case IH fertilizer bars are made from our exclusive Earth Metal proprietary steel for superior durability and lasting life. Notched sealing disks are recommended for consistent closing in un-tilled stubble and heavy residue. Notched disks with holes (Part No. 84374420) are recommended in moist, sticky soil conditions.

**Earth Metal Tool Bar and Fertilizer Coulters**

PART NO.	DESCRIPTION	DIA. (IN)	THICKNESS (MM)	CENTER (IN)	NO. OF BOLT HOLES	BOLT CIRCLE	APPLICATIONS
443627A1	Rippled coulters	20	4.5	3.60	4	4.5"	2800, 4300, 5300, 920, 930, NPX
443626A1	Smooth coulters	20	4.5	3.60	4	4.5"	3100, 3250, 4300, 5300, 930
443638A1	Smooth coulters	24.8	4.5	3.60	4	4.5"	4300, 5300, 5310, 920, 930, 940, 950, NPX, NTX
73343422	Rippled coulters	20	4.5	4	4	5/5.25'	Unverferth, Deere, Fast, others

**Earth Metal Sealing Coulters**

PART NO.	DESCRIPTION	DIA. (IN)	THICKNESS (MM)	CENTER (IN)	NO. OF BOLT HOLES	BOLT CIRCLE	APPLICATIONS
443622A1	Sealer coulters	13.8	2.5	2-1/2	4	4"	3100, 3250, 4300, 5300, NPX
443623A1	Sealer coulters	14	2.5	2-1/2	4	4"	930, 3100, 3250, 4300, 5300, 5310, NPX, NTX
84180366	Sealer coulters	18.1	3	2-1/2	4	5"	NPX5300
84380555	Sealer coulters	18.1	3	2-1/2	4	5"	930, 940, 950, 4300, 5300, 5310, NPX, NTX
84380560	Notched sealer	18.1	3	2-1/2	4	5"	930, 940, 950, 4300, 5300, 5310, NPX, NTX
84374420	Notched sealer with holes	18.1	3	2-1/2	4	5"	950



**Liquid Injector Kit**

**Part No. 84494407**

- Includes parts to install liquid injector
- Use to convert from knives or install on bare machine
- Use one kit per row

**Coulters Knife Kit**

**Part No. 47839924**

- Includes knife, shims and hardware to install coulters knife
- Use to convert from liquid injector or install on bare machine
- Use one kit per row

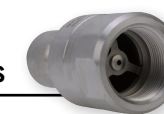
**ACCESSORIES**

**Ammonia/Liquid Fertilizer EVA Tubing**



PART NO.	DESCRIPTION
25630601	3/8" x 166'
25630602	3/8" x 250'
25630801	1/2" x 166'

**Anhydrous Couplers**



PART NO.	DESCRIPTION
34410032	Male 1-1/4"
34410033	Female 1-1/4" NPT

**Manifolds**



PART NO.	DESCRIPTION
34199024	Continental 14 outlet, 1/4" NPT
15040251	Hose barb, 1/4" NPT x 3/8"
15040252	Hose barb, 1/4" NPT x 1/2"

**Anhydrous Ammonia Gauges**

**Part No. 34599060**

- 60 PSI
- 2-1/2" diameter

**Part No. 34599015**

- 160 PSI
- 4" diameter
- Liquid filled



**150 PSI EPDM Hose**

PART NO.	DESCRIPTION
47473651	3/8" x 72'
86990849	3/4" x 20'
47453859	3/4" x 145'
134329C3	1" x 50'
86984447	1-1/4" x 100'
25731501	1-1/2" x 13'
84475733	2" x 20'



**FERTILIZER KNIVES**

Case IH Tuff One anhydrous knives are engineered with an extended-wear chromium carbide wear point to cover more acres.

PART NO.	DESCRIPTION
33607001	Tuff One II knife 3/8" tube without sealer
33607002	Tuff One II knife 3/8" tube with sealer
33607003	Tuff One II knife 1/2" tube without sealer
33607004	Tuff One II knife 1/2" tube with sealer
33605001	Tuff One II knife twin 3/8" tubes without sealer
33607130	Strip till knife 3/8" tube and 1-1/2" dry tube
33607135	Strip till knife 3/8" tube without sealer

Note: These are all 3/8" thick knives for side-mount shanks only.

**LIQUID KNIVES**

**The Case IH Advantage**

Case IH engineers have worked hard to deliver better liquid knife performance—developing a chromium-carbide knife that outlasts plate-steel competitors two to four times over. Longer life means more time spent in the field and less time changing knives.

**Agronomic Design**

Case IH chromium-carbide knives maintain their shape throughout their lifetime. Placing N-P-K programs properly during side dress is key to plant growth and development.



**STEPS TO SELECTING THE RIGHT BLADE**

**Step 1**

You must first identify the size of the disk blade you need. For illustrative purposes, we will assume that you're looking for a 20" x 4.5 millimeter-thick disk blade.

**Step 2**

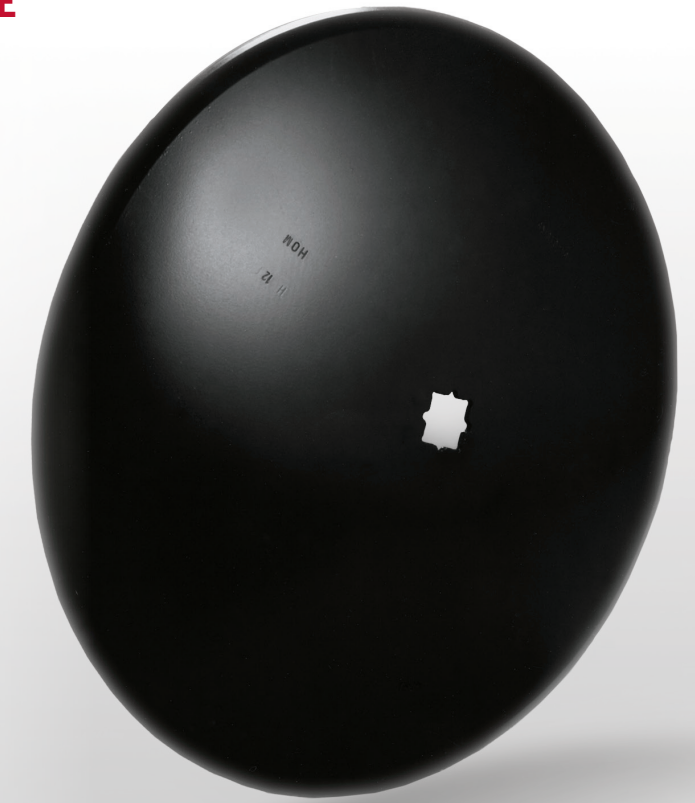
The size and shape of the center hole depends on the arbor bolt size. As an example, let's say you're looking for the disk blade size listed above with a 1-1/2" round arbor bolt.

**Step 3**

Finally, you need to decide if you are looking for a solid blade or a notched blade. Again, in this case, we'll assume it's a solid blade.

**Step 4**

The following pages contain charts to help you identify the proper blades based on the dimensional preferences identified in steps one through three. If you are fitting disk blades to a Case IH machine, you will need to refer to the chart titled "Crimp Centered Disk Blades" on page 18. If you are looking for full concave disk blades to fit any other make and model, you need to refer to the "Full Concavity Disk Blades" chart on page 17.








**EXAMPLE**

Based on the below example, you would choose part number 87618056. Need some extra tilling power? Go with our Super Sharp™ edge notched blades, part number 87618057.

BLADE SIZE		ARBOR BOLT SIZE												PART NO.			
DIA (IN)	THICKNESS (MM)	7/8" SQ	1" SQ	1" RD	1-1/8" SQ	1-1/8" RD	1-1/4" SQ	1-1/2" SQ	1-1/2" RD	1-5/8" RD	1-3/4" SQ	1-3/4" RD	2" RD	2-1/4" SQ	HOLE STYLE	SUPER SHARP SOLID	SUPER SHARP NOTCHED
20	4.5							•	•						SR4	87618056	87618057

## DISK BLADE CENTER HOLE REFERENCE GUIDE

		HOLE SIZE	FITS ARBOR BOLT		
	CLOVERLEAF OR SQUARE (CL)	CL1	7/8" square	7/8" round	—
		CL2	1" square	1" round	—
		CL3	1-1/8" square	1-1/8" round	—
		CL4	1-1/4" square	1-1/4" round	—
		CL5	1-1/2" square	1-1/2" round	—
		CL6	1-3/4" square	1-3/4" round	—
	ROUND (R)	R1	1" round	—	—
		R2	1-1/8" round	—	—
		R3	1-1/4" round	—	—
		R4	1-1/2" round	—	—
		R5	1-3/4" round	—	—
		R6	2" round	—	—
		R6.5	2-1/4" round	—	—
R7	2-1/2" round	—	—		
	SQUARE ROUND (SR)	SR1	7/8" square	1" round	—
		SR2	1" square	1-1/8" round	—
		SR3	1-1/8" square	1-1/4" round	—
		SR4	1-1/4" square	1-1/2" round	—
		SR4.5	1-1/2" square	1-5/8" round	—
		SR5	1-1/2" square	1-3/4" round	—
		SR6	1-3/4" square	2" round	—
SR7	2-1/4" square	2-1/2" round	—		
	DUAL SQUARE (DS)	DS1	7/8" square	1" square	1" round
		DS2	1" square	1-1/8" square	1-1/8" round
		DS3	1-1/8" square	1-1/4" square	1-1/4" round
		DS4	1-1/2" square	1-3/4" square	1-3/4" round
	SQUARE (SQ)	SQ1	1" square	—	—
		SQ1.5	1-1/4" square	—	—
		SQ2	2-3/8" square	—	—

## THICKNESS CONVERSION CHART FOR DISK BLADES: GAUGE/INCH TO METRIC

METRIC (IN)	NEAREST GAUGE (IN)	FRACTION (IN)
3mm (.118)	11 (.120)	1/8" (.125)
3.5mm (.138)	10 (.134)	—
4mm (.157)	9 (.148)	—
—	8 (.165)	—
4.5mm (.177)	7 (.180)	3/16" (.187)
5mm (.197)	6 (.203)	—
6.5mm (.256)	—	1/4" (.25)
8mm (.315)	—	5/16" (.312)
10mm (.394)	—	3/8" (.375)

## 3-Bolt Shares

INCHES		SHARE TYPE		PART NO.	
FULL CUT	UPSET	DEEP SUCK	RIBBED	R.H.	L.H.
14	•			179349A1	—
16	•			179350A1	—

## 4-Bolt Shares

INCHES		SHARE TYPE		PART NO.	
FULL CUT	UPSET	DEEP SUCK	RIBBED	R.H.	L.H.
12	•			463235R2	—
14	•			463236R2	—
16	•			463237R2	464582R2
18	•			463238R2	464583R2
12		•		463251R2	—
14		•		463252R2	—
16		•		463253R2	464590R2
18		•		463254R2	464591R2
16	•			481964R3*	—
18	•			481965R3*	485927R3*
16		•		481960R3*	464578R4*
18		•		481961R3*	464579R4*

\*Hard surfaced

Note: full-cut shares in one size may be used as a narrow cut for the next largest size and as an over cut for the next smallest size (e.g., The same share listed as a 16 full cut can be used as an 18 narrow cut or a 14 over cut).

Attaching parts: 463988R41 bolt with nut (two used with 3-bolt share, three used with 4-bolt shares), 463989R41 bolt with nut (one used)

## Trashboards

### Steel Trashboards

Made from heat-treated spring steel, these trashboards keep a high polish in most types of soil. The exclusive lock-on design prevents the trashboard from shifting.

### Plastic Trashboards

Recommended for normal soil conditions, plastic trashboards are the answer to scouring problems. Their smooth surface resists dirt and mud, and the plastic is flexible, so they kick off dirt when in action. These trashboards won't rust and pit when not in use.

PLOW BOTTOM	TRASHBOARD		ATTACHING BRACKET
	STEEL	PLASTIC	
R.H.	464719R4	476811R1	484688R2
L.H.	467817R4	483682R1	484687R2

Part No. 464719R4



## Plow Shins

DESCRIPTION	R.H.	L.H.
Long-life, impact-resistant shin	179318A1	179319A1
Value-priced shin	179320A1	179321A1











DISK BLADE CENTER HOLE REFERENCE GUIDE | DISKS AND RIPPERS

MAKE	MODEL	AXLE SIZE
Land Pride	DH35	1-1/8" square
Landoll	Tilloll, Weatherproofer, 860, 865, 870	1-1/2" round
	6210, 6230, 6250	1-3/4" round
Long	953	7/8" square
	1080, 1087-88-89	1-1/2" square
Massey Ferguson	MF820, MF620, MF520	1-1/4" square
	MF270, MF30-720, MF40	1-1/2" square
	MF21	1" square
	MF25, MF39	1" round
	MF52, MF72	1-1/8" round
McFarlane	MF120, MF213, MF220, MF233	1-1/8" square
	Quadra-Till	1-1/2" square
Miller	series I, II	1-3/4" round
M&W	Earthmaster (on gang)	1-1/2" square
Nammco	HDDB-8	2-1/8" round
	ST440	1-1/2" round
New Holland	ST460	1-1/2" square
	OD100, OD200, TD100, TD200	1-3/4" round
	OD300	2" round
Porter's Welding	Offset PWH series	1-5/8" round
	POD Orchard SERIES	1-1/2" square
	127/1667, 131, 137/187, 177	1-1/2" square
Rhino	Flex 90	1-1/8" square
	Flex 90B	1-1/4" square
Rome Plow	AH, ACH, TAW, TACW, 4250 series	2-1/8" round
	BH, CH, TCW, TBW, 185, 240, 265 2000 rippers, 2250 series	1-5/8" round
Schmeiser	TMR, TACWR, TRW, TRCW, RCH, TRH-S, TRCH	2-1/2" round
	All models	1-3/4" round
Schafer	355	1-3/4" round
	555	2" round
Sunflower	1210, 1230	1-1/2" round
	1211, 1212, 1231, 1234, 1320, 1330, 1321, 1331, 1430, 1435, 1440, 1431, 1441, 1444, 1541, 1544, 1550, 211, 6010, 6030, H-3, H-4	1-3/4" round
	1710, 1730, 1810, 1830	2" round
	1710HD	2-3/4" round
Sweco	500-3P, 510	1-1/2" square
	600, 610, 610 LW	1-3/4" square
	700, 800, 810, 900, 910	2-1/4" square
Taylor Way	200251-200268, 200284-200291, 200310-200315; 650/670 series	1-1/2" square
	200108-200118, 200023, 200024, 200196-200199, 2000051-2000068, 2001 series, 200035, 200036, 200037, 200048, 200049, 350/351/580 series	1-1/8" square
	200011, 200013, 2000165, 2000166, 2000167	7/8" square
Tatu	10020, 8013, 9017	2-1/2" round
	2240, 7010 GOM/GCRO, 6009 ATCR	1-5/8" round
	8009T	1-1/2" round
	GAPCR 360	2" round
	7913 GAPCR, 7012 GCRO	2 1/8" round
	9009T	1-3/4" round
	1000T	1" square
3007 GNCR	1-1/4" round	
Terra-Riser	ETO, ETE	1-1/4" round
	ETOX, ETC, EMDL, EMDW, ECGW, EBW, EBH	1-5/8" round
	EAW, EAWB, EACW, EAH, EABH, EACH	2-1/8" round
Tuffline	ERW, ERCW, ERH, ERCH	2-1/2" round
	TGE, TME	1" square
Vassar	THE	1" or 1-1/8" square
	TH, THF, TL43, T4X, HL, TLO, TWS,	1-1/8" square
	L040, TW6, 38, 42, 63	1-1/2" square
Versatile	Disc-EZY	1-1/8" square
	All	2" round
White	250, 251, 252, 253, 254, 255, 256, 263, 264, 271, 272	1-1/8" square
	265, 281	1-1/2" square
	273, 274	1-1/2" round
Wishek	612N, 812N 842N, 862N, 932N	2" round
	714NT, 742NT, 814NT, 816NT, 842NT, 862NT	2" round

Reversible Shovels for Cultivators

LENGTH	WIDTH	THICKNESS	HOLES	HOLE SPACING	BOLTS USED	STYLE	PART NO.
6-7/8"	2"	5/16"	2	1-3/4"	7/16" no. 3 plow (2)	Chisel	594227R1*†
8"	2"	3/16"	1	—	3/8" no. 3 plow (2)	Chisel	25332BA
9"	2-1/2"	1/4"	2	1-3/4"	7/16" no. 3 plow (2)	Chisel	84341519
10"	2-1/2"	5/16"	2	1-1/4" to 2-1/4"	7/16" no. 3 plow (2)	Chisel	130384
10-1/8"	1-3/4"	1/4"	2	1-3/4"	7/16" no. 3 plow (2)	Chisel	596623R1
11"	2"	3/8"	2	1-5/8"-1-3/4"	7/16" no. 3 plow (2)	Chisel-flat back	87546271
11"	2"	3/8"	2	1-5/8"-1-3/4"	7/16" no. 3 plow (2)	Chisel-curved back	86990834
11"	2-1/2"	1/4"	2	2" to 2-1/4"	7/16" special sweep (2)	Chisel	25702BA
11-1/2"	2"	3/8"	2	1-3/4"	7/16" no. 3 plow (2)	Chisel	811799C3
11-3/4"	2"	3/8"	2	1-3/4"	7/16" no. 3 plow (2)	Chisel-flared ends	86990834
12"	2"	5/16"	2	1-3/4"	7/16" no. 3 plow (2)	Chisel	811889C1
13-3/4"	2"	1/4"	2	1-1/4" to 2-1/4"	7/16" no. 3 plow (2)	Chisel	602145R1
14"	2"	5/16"	2	1-3/4"	7/16" no. 3 plow (2)	Chisel	547188R2
16"	4-1/2"	3/8"	2	2-1/4"	1/2" no. 3 plow (2)	Chisel	45163M

\*Recommended for IH, Case IH and Wil-Rich Chisel Plows  
† Single point, not reversible



## SHOVELS AND POINTS

Choose from a complete line of shovels and points—manufactured from durable, high-carbon steel and uniformly heat-treated for superior wear and toughness. They are available in single and double points, heavy-duty spikes, chisels, twisted shovels and heavy-duty, double-pointed shovels.

### Twisted Shovels for Chisel Plows

LENGTH	WIDTH	THICKNESS	HOLES	HOLE SPACING	BOLTS USED	STYLE	PART NO.
21-1/2"	3"	3/8"	5	2-1/4" to 2-1/2"	1/2" no. 3 plow (2)	L.H. Twist, V point	594545R1
21-1/2"	3"	3/8"	5	2-1/4" to 2-1/2"	1/2" no. 3 plow (2)	R.H. twist, V point	594546R1
22"	3"	1/2"	5	2-1/4" to 2-1/2"	1/2" no. 3 plow (2)	L.H. Twist, V point	B95242
22"	3"	1/2"	5	2-1/4" to 2-1/2"	1/2" no. 3 plow (2)	R.H. twist, V point	B95243
26-1/2"	3-1/2"	1/2"	4	2-1/4" to 2-1/2"	1/2" no. 3 plow (2)	L.H. Twist, slash point	812384C3
26-1/2"	3-1/2"	1/2"	4	2-1/4" to 2-1/2"	1/2" no. 3 plow (2)	R.H. twist, slash point	812385C3
26-1/2"	4"	1/2"	4	2-1/4" to 2-1/2"	1/2" no. 3 plow (2)	L.H. Twist, slash point	1995505C1
26-1/2"	4"	1/2"	4	2-1/4" to 2-1/2"	1/2" no. 3 plow (2)	R.H. twist, slash point	1995506C1

### Recommended Hardware

KIT PART NO.	QTY	DESCRIPTION
P2024504	50	1/2" x 2-1/4" plow bolt
	50	1/2" serrated flange nut
P2024506	50	1/2" x 2-1/2" plow bolt
	50	1/2" serrated flange nut



### Reversible Points for Chisel Plows

LENGTH	WIDTH	THICKNESS	HOLES	HOLE SPACING	BOLTS USED	STYLE	PART NO.
14"	2"	5/8"	2	1-3/4"	7/16" no. 3 plow (2)	Chisel	5787
15-3/4"	4-1/2"	5/16"	2	2-1/4" to 2-1/2"	1/2" no. 3 plow (2)	Chisel	602595R3
15-3/4"	4-1/2"	5/16"	2	2-1/4" to 2-1/2"	1/2" no. 3 plow (2)	Chisel	602595R3N
16"	2"	5/8"	2	2-1/4" to 2-1/2"	7/16" no. 3 plow (2)	Chisel	87589836
16-7/8"	2"	5/8"	2	2-1/2"	1/2" no. 3 plow (2)	Chisel	601986R1
16-7/8"	2"	5/8"	2	2-1/2"	1/2" no. 3 plow (2)	Spike	602594R1
18"	2"	1"	2	2-1/2"	Hex-1/2" x 2-3/4"	Chisel	193054A1
19-1/2"	2"	7/8"	2	2-1/2"	Hex-1/2" x 2-1/2"	Chisel	B93368
19-1/2"	2"	7/8"	2	2-1/2"	Hex-1/2" x 2-1/2"	Chisel	B93370*

\*Recommended for IH, Case IH and Wil-Rich Chisel Plows



### Flat-Center Disk Blades

PART NO.	DIA. (IN)	THICKNESS (MM)	CENTER HOLE DIA. (IN)	NO. OF HOLES	BOLT CIRCLE (INCHES/MM)	EDGE
443623A1	14	2.5	2-1/2	4	101.6	Standard
84180366	18.1	3	2-1/2	4	127	Standard
443629A1	18.1	6.5	4	5	139.7	Standard
84380555	18.1	3	2-1/2	4	127	Standard
84380560	18.1	3	2-1/2	4	127	Notched
87443007	20.3	5	4	5	139.7	Super Sharp
87443008	20.3	6.5	4	5	139.7	Super Sharp
87443009	20.3	6.5	4	5	139.7	Super Sharp notched
87443010	22.3	6.5	4	5	139.7	Super Sharp

### Three-Sided Blades

PART NO.	DIA. (IN)	THICKNESS (MM)	HOLE STYLE	ARBOR BOLT SIZE
87401019	20	5	CL5	1-1/2" square
87415788	20	5	SR4	1-1/4" square, 1-1/2" round



Part No. 87401019

## DISK HARROWS – DISK BLADES



OPEN 24/7



### Speed-Tiller™ 465/475 Replacement Parts

#### Disk Blades

- Part No. 44920141
  - 22" x 6mm Scalloped disc
- Part No. 44920144
  - 24" x 6mm Scalloped disc



24" disc

#### Curved Right Hand Jump Arm w/ Hub

- Part No. 29003JAAR1
- Part No. 29003JAWR1 (arm only)

#### Curved Left Hand Jump Arm w/ Hub

- Part No. 29003JAAF1
- Part No. 29003JAWF1 (arm only)

#### Complete Bearing Assembly

- Part No. 2900HRBA60

#### Complete Disc Hub Unit

- Part No. 29003JAA03



# YOUR DAY DOESN'T STOP AT 5:00. NEITHER DO WE.

Most days you're up with the sun and work doesn't end until the chores are done. We get it. That's why [mycnhistore.com](http://mycnhistore.com) is open all hours so you can get the parts you need, when you need them. Maintain parts for your entire fleet by using your laptop or phone to search by category, model or part number. Get in and out with a simple, secure checkout and save your list so ordering next time is even faster. Keep your equipment running as efficiently as your operation with 24/7/365 access to genuine Case IH parts at [mycnhistore.com](http://mycnhistore.com).

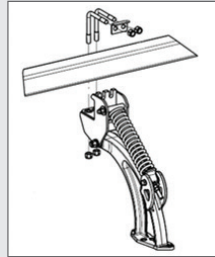
Visit [mycnhistore.com](http://mycnhistore.com) and get uptime delivered.



©2022 CNH Industrial America LLC. All rights reserved. Case IH is a trademark registered in the United States and many other countries, owned by or licensed to CNH Industrial N.V., its subsidiaries or affiliates. CNH Industrial Genuine Parts is a trademark in the United States and many other countries, owned by or licensed to CNH Industrial N.V., its subsidiaries or affiliates. [www.caseih.com](http://www.caseih.com)



**ECOLO-TIGER® 870/875 PERFORMANCE UPGRADES**

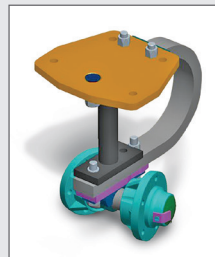


Part No. 84577505

**Leveler Mount Kit**

**Part No. 84577505**

- The previous leveler mounting hardware was replaced with lock nuts, plate and double “L” bolts for improved leveler attachment
- Enhanced leveler arm mount for added strength and to accommodate the new hardware



Part No. 47469624

**C-Spring Kits**

**Part No. 47469552 (Outer Kit) and Part No. 47469624 (Center Kit)**

- Kits include a rod “stop” and new hardware as illustrated to the left
- Improves fatigue tolerance and minimizes failure
- Increase life of C-hanger (more acres between service intervals)
- Minimizes the movement of the C-hanger in extreme conditions
- Engineering testing verifies twice the service life

**Disc Leveler Bearing Kit**

**Part No. 48043954 (Pre-2006 Production)**

**Application:** 527, 527B, 530, 530B, 730, 730B, 5300, NTX5300, 950

- Includes cup/cone and hardware

**Tandem Bearing Kit**

**Part No. 47779129**

A new kit is now available to upgrade 870 Ecolo-Tigers to the tandem axle castings used on 875 Ecolo-Tiger implements. These castings allow for larger bearings, which increase durability.

PART NO.	QUANTITY	DESCRIPTION
47444487	1	RH casting
47553048	1	LH casting
88871	4	Nut
88576	1	Bolt
87016560	2	Nut
16806045	2	Set crew
14032409	2	Nut
47571830	4	Spacer
47571831	2	Pin
115950	4	Seal
47584782	4	Bearing

**Wheel Bearing Kit**

**Part No. 48043954**

**Application:** 870 and 875 Ecolo-Tiger

- Includes bearing and hardware



**Extenda-Wear™ Earth Metal® Disk Blades**

For customers in extremely abrasive soils or those just looking for longer life, Extenda-Wear disk blades are now available. These blades are treated with a special coating that yields a disk that is nearly as hard as tungsten carbide but without the brittleness. This can triple or even quadruple wear life, as compared to non-treated blades.



BLADE SIZE DIA.															PART NO.		
DIA (IN)	THICKNESS (MM)	1-1/8" SQ	1-1/4" SQ	1-1/2" SQ	1-3/4" SQ	2-1/4" SQ	1-1/8" RD	1-1/4" RD	1-1/2" RD	1-5/8" RD	1-3/4" RD	2-1/4" RD	2-5/16" SQ	HOLE STYLE	STANDARD EDGE SOLID	STANDARD EDGE NOTCHED	CONCAVITY (MM)
<b>FULL CONCAVITY BLADES</b>																	
26.5	6.5			•					•					CL5	58934C3EW	58917C3EW	87
28.5	6.5			•					•					CL5	27601R3EW	27600R3EW	95
28.5	8			•					•					CL5	31224R3EW	31225R3EW	95
32.5	8				•									CL6	—	60279C3EW	110
<b>CASE IH CRIMP CENTER DISKS</b>																	
24	6.5			•					•					CL5	—	73342946EW	78
24	6.5	•					•							CL3	73342947EW	—	78
26.5	6.5			•					•					CL5	73342955EW	73342953EW	87
26.5	6.5			•										SR5	407434R4EW	407431R4EW	87
28.5	8			•					•					SR4.5	73342969EW	73342967EW	95
32.5	10					•								CL7	—	998861R2EW	127

**Rollable Boron Blades**

For customers who prefer to sharpen disk blades via rolling, a special boron alloy was developed. This special steel maintains the toughness and durability of boron while retaining the ability to roll the edge. The rolling of Earth Metal is not recommended, as the advanced boron alloy creates a steel that is too hard. Rolling can stress the material and result in fracturing of the edge.

BLADE SIZE DIA.									PART NO.	
DIA (IN)	THICKNESS (MM)	1-1/8" SQ	1-1/4" SQ	1-1/2" SQ	1-1/4" RD	1-1/2" RD	1-3/4" RD	HOLE STYLE	SUPER SHARP EDGE SOLID	COMMON APPLICATIONS
<b>FULL CONCAVITY BLADES</b>										
22	6.5	•	•		•			DS3	73343415RB	Deere
22	6.5						•	R5	73343414RB	Landoll
24	6.5						•	R5	73343420RB	Sunflower
24.1	6.5	•	•		•			DS3	73343418RB	Deere
24.1	6.5					•		R4	73343419RB	Kuhn-Krause
<b>CASE IH CRIMP CENTER DISKS</b>										
22	6.5		•			•		SR4	47850049	—
24.3	6.5			•		•		CL5	87443004RB	—
24.5	6.5			•		•		CL6	87443006RB	—



**NEW BLADES? TIME FOR NEW BEARINGS.**

When you invest in new blades—particularly our stronger, sharper and longer-wearing Earth Metal® blades—you'll want new bearings as well. The following pages showcase your Case IH dealer's extensive line of disk harrow bearings, sorted by manufacturer.

MANUFACTURER	PART NO.	BORE	REFERENCES	APPLICATION	FLANGE
<b>ALLIS CHALMERS</b>					
—	DC211TT3	1-1/2" square	W211PP3	K7 disk	—
<b>AMCO</b>					
10272	DS208TT5	1-1/8" square	W208PPB5	WTD5, WTD6, LFD2, LFD2 disk	DS80MS
10333	DS208TT8	1-1/8" square	W208PPB8	WTD10, WTD3, WTD4 disk	—
11052	DC210TT2	1-15/16" round	W210PP2	Disk harrow with 1-15/16" axle	—
11071	DC211TT3	1-1/2" square	W211PP3	516, 517, 518, F15 disk harrow	—
11078	DS210TT4	1-1/8" square	W210PP4	Disk harrow with 1-1/8" axle	DS90MS
11079	DS208TT6	1" square	W208PPB6	LFD2, LFB2, LTB2	—
11503	DC211TTR4	1-1/2" square	GW211PP4	—	—
11504	DC214TTR3	2.688" round	GW214PP3	Disk harrow with 2.688" axle	—
G10218	DC214TTR2	2-3/4" round	GW214PP2	WTF2, WOJ10, WOF10 disk	—
G10333	DS208TTR8	1-1/8" square	GW208PPB8	13-1/2 pulverizing disk	DSG80MSA
G10771	DS210TTR2	1-15/16" round	GW210PPB2	Disk harrow with 1-15/16" axle	DSG90MSA
G10906	DS211TTR3	1-1/2" square	GW211PPB3	Disk harrow with 1-1/2" axle	DSG100MSA
G10272	—	1-1/8" square	GW208PPB5	Disk harrow with 1-1/8" axle	—
G11071	DC211TTR3	1-1/2" square	GW211PP3	WOF3, WOF5, WOF6, WOJ3, WOJ4, offset disk	—

**Individual Disk Complete Hub Kit**

**Part No. 73340669** (not shown)

- Kit includes necessary repair parts for an Ecolo-Tiger 870 equipped with individual cushion disk units (hub and all internal components for one cushion disk mount)
- Parts below included in kit or bill of material (BOM)

QTY	PART NO.	DESCRIPTION	QTY	PART NO.	DESCRIPTION
1	28705006	Hub assembly	1	88350	Cotter pin 5/32" × 1-1/2"
1	86512015	Bearing cone	1	47468696	Hub cap
1	87415559	Seal	1	84151573	Slotted nut 7/8" – 14mm, G5
1	87415557	Seal	1	87024780	Washer 1-1/16" × 2" × 2.19", HDN
1	87415558	Seal	1	48048501	Disc Leveler Bearing Kit – Pre-2066
1	48043954	Wheel Bearing Kit			

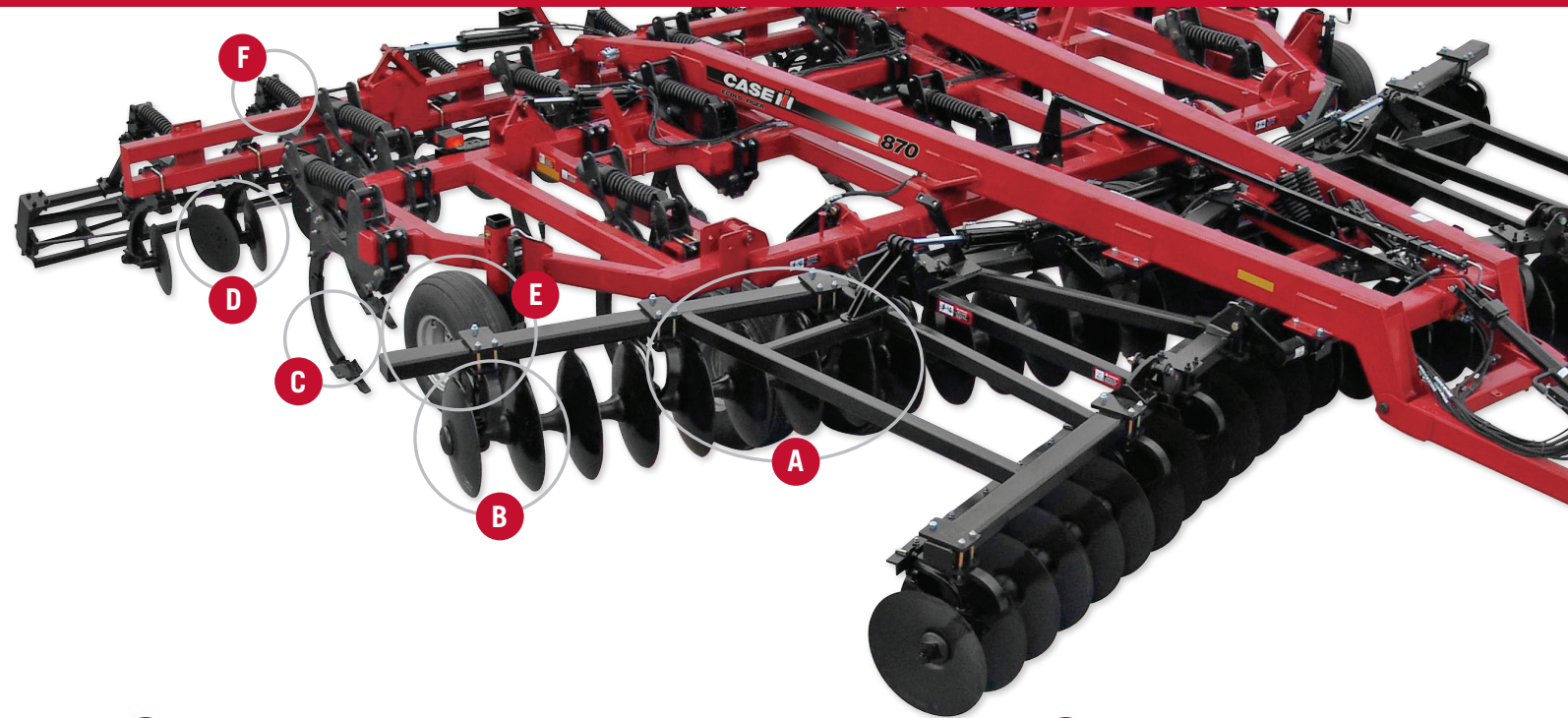


**Earth Metal® Ripper Coulters**

The coulters on Case IH rippers are made from our exclusive Earth Metal steel for durability and long life. Our Super Sharp™ edge is up to five times sharper than standard edges, providing increased capability to process and size tough crop residue.

PART NO.	APPLICATION	DIA. (IN)	THICKNESS (MM)	CENTER HOLE DIA (IN)	NO. OF HOLES	BOLT CIRCLE (IN)	EDGE
84180366	Disk leveler	18.1	3	2.5	4	5	Plain
443635A1	2500 coulters plain	22.6	4.5	3.6	4	5	Plain
443637A1	2500 coulters fluted	22.6	4.5	3.6	4	5	Fluted
87443007	527B coulters	20.3	5	4	5	5.5	Super Sharp
87443008	530B-730B	20.3	6.5	4	5	5.5	Super Sharp
87443009	530B-730B	20.3	6.5	4	5	5.5	Super Sharp notched
87443010	530B-730B	22.3	6.5	4	5	5.5	Super Sharp
87457567	530C-730C	22.4	6.5	4	5	5.5	Super Sharp
87457566	530C-730C	24.4	6.5	4	5	5.5	Super Sharp
47648677	870/875 ind. coulters	22.4	6.5	2.5	5	5.5	Super Sharp
47648699	870/875 ind. coulters	24.5	6.5	2.5	5	5.5	Super Sharp
87443004	870/875 gang mount	24.3	6.5	1.5	—	—	Super Sharp
58934C3	870/875 gang mount	26.5	6.5	1.5	—	—	Plain





**A Tandem Transport Hub Bearing Kit with Hardware (Better)**

Part No. 73340659

- Kit includes all internal components for an Ecolo-Tiger® 870 with walking beam transport axles (one hub)



**A Tandem Transport Bearing Kit (Good)**

Part No. 73340658

- Kit includes the bearings and seals for an Ecolo-Tiger 870 with walking beam transport axles (one hub)



**B Bearing Kits**

Part No. 47781007 (standard)

Part No. 47781010 (deluxe)

Application: 870 and 875 Ecolo-Tiger rippers, 370 True-Tandem disk harrows

- Kits include all necessary components to replace the bearing in the mounting trunnion on the disk gang

**C Wear Shin**

Part No. 87700394

- Increases the life of parabolic shanks
- Austempered for extended wear



**C Coverboards**

Part No. 33310079 – 4"

Part No. 33310080 – 6"

Part No. 33310071 – 8"

Application: 1-1/4" and 1-1/2" parabolic shanks

- Bury more residue
- Not for use in conjunction with wear shins
- Reversible



**D Disk Leveler Hub Bearing Kit**

Part No. 73340670

Application: 870 and 875 Ecolo-Tigers

Part No. 73340226

Application: 530B/C, 730B/C, 527B Ecolo-Tigers

- Bearing repair kit for the disk leveler hub

**E Gauge Wheel Hub Assembly Repair Kit**

Part No. 73340662

- Complete repair kit without hub and lug bolts; all internal components included for a bearing repair

**F Disk Leveler T-Bolt and Spring Kit**

Part No. 47721935

- Kit used to repair the disk leveler

MANUFACTURER	PART NO.	BORE	REFERENCES	APPLICATION	FLANGE
<b>ATHENS</b>					
—	DC208TT5	1-1/8" square	W208PP5	Ridger	—
—	DS208TT5	1-1/8" square	W208PPB5	Ridger	DS80MS
—	DS208TT6	1" square	W208PPB6	—	—
—	DC211TT3	1-1/2" square	W211PP3	Levee plow, 1st series	—
—	DC211TR2	2-3/16" round	GW211PP2	Disk harrow	—
—	DC211TR3	1-1/2" square	GW211PP3	Disk harrow	—
—	DS211TT6	1-1/2" square	W211PPB6	Levee plow, 2nd series	DS100MS
—	DS211TR3	1-1/2" square	GW211PPB3	Disk harrow, new ground disk	DSG100MSA
<b>BINGHAM</b>					
GA15	DC208TT5	1-1/8" square	W208PP5	Bedder	—
<b>BLANTON</b>					
1023	DS208TT12	1-1/8" square	W208PPB12	Square axle disk	—
7129	DC208TT5	1-1/8" square	W208PP5	Disk harrow	—
BC1	DC208TT8	1-1/8" square	W208PP8	—	—
L512B	—	7/8" square	W208PPB11	Square axle disk	—
<b>BRENT</b>					
—	DS211TR13	1-3/4" round	GW211PPB3	Front gang. Early CPC and Earthquake with 4 bolt flange	DSG100MSA
—	DS209TT2	1.7717" round	W209PPB2	Rear gang. Early CPC and Earthquake with 2 piece flange	DS85MS
—	FD211RE	1-3/4" round	DHU1-3/4S211	Rear gang. Late CPC and Earthquake with 4 bolt flange	—
<b>BRILLION</b>					
2J516	DS208TT5	1-1/8" square	W208PPB5	—	DS80MS
3J131	DS211TT3	1-1/2" square	W211PPB3	—	DS100MS
9C16	DC208TT8	1-1/8" square	W208PP8	—	—
—	FD211RM	1-1/2" square	DHU1-3/4S211	Land Commander I and II disk gang	—
<b>BURCH</b>					
—	DS210TT2	1-15/16" round	W210PPB2	EZ, EZ-A, EZ-B, 145 disk. Kwik set, hipper/ridger	DS90MS
201A56	DS208TT13	7/8" square	W208PPB13	Harrow	DS80MS
203214	DS211TT3	1-1/2" square	W211PPB3	Offset disk	DS100MS
204-82	DS211TT6	1-1/2" square	W211PPB6	Super Tandem 1973-up	DS100MS
208-12	DS209TTR2	1-3/4" square	GW109PPB2	—	DSG85MSA
78672A	DS211TR3	1-1/2" square	GW211PPB3	Offset disk, Super Tandem	DSG100MSA
9554A	DC208TT5	1-1/8" square	W208PP5	Ridger, 8 row	—
J9373	DS208TT5	1-1/8" square	W208PPB5	Ridger, E-Z set, E-2GO, Early	DS80MS

MANUFACTURER	PART NO.	BORE	REFERENCES	APPLICATION	FLANGE
<b>BUSH HOG</b>					
1100082475	DS208TT2A	1-1/2" round	W208PPB2	Disk harrow with 1-1/2" axle	DS80MS
14-6-244	DC211TTR2	2-3/16" round	GW211PP2	Disk harrow with 2-3/16" axle	—
14-36-183	DC208TTR17	1-1/8" square	GW208PP17	1424, 1426, 1432, 1436, 1438, 1439, 1444, WITH 1-1/8" gang bolt	—
14-22-63	DS208TT6	1" square	W208PPB6	Disk harrow with 1" axle	DS80MS
14-24-26	DS208TT12	1-1/8" square	W208PPB12	Disk harrow	—
14-24-63	DC208TTR17	1-1/8" square	GW208PP17	1422, 1423 disk with 1" gang bolt	—
14-4-5	DS209TT2	1.7717" round	W209PPB2	1432, 1436 disk	DS85MS
14-5-109	DS210TT2	1-15/16" round	W210PPB2	145	DS90MS
14-6-430	DC211TTR3	1-1/2" square	GW211PP3	145, 146, 246, 1435, 1437 WITH 1-1/2" gang bolt	—
16-11-176/7950006	DC208TT5	1-1/8" square	W208PP5	Bedder and ridger	—
<b>CALDWELL</b>					
—	DS208TT5	1-1/8" square	W208PPB5	1-1/8" axle models	DS80MS
<b>CALKINS</b>					
5449031	DS209TTR5	1-1/4" square	GW209PPB5	—	DSG85MSA
<b>CASE</b>					
270061503	DC214TTR3	2.688" round	GW214PP3	—	—
H747139	DC208TT5	1-1/8" square	W208PP5	Trencher boom end sprocket	—
H747303	DC208TT10	1-1/2" round	W208PP10	TF300 trencher boom end sprocket	—
H747394	DC211TT2	2.188" round	W211PP2	Trencher boom end sprocket	—
H747410	DS209TT2	1.7717" round	W209PPB2	CASE Davis 700 chain drive	DS85MS
H747444	DC211TT3	1-1/2" square	W211PP3	CASE, CASE Davis trenchers	—
T14116	DC208TT2	1" square	W208K2-E9003	—	—
T15820	DS208TT6	1" square	W208PPB6	Small ridger	DS80MS
T16288	DS208TT5	1-1/8" square	W208PPB5	—	DS80MS
T25486	DS208TT8	1-1/8" square	W208PPB8	630210R91	DS80MS
T28503	DS208TT12	1-1/8" square	W208PPB12	Disk harrow	—
T34178	DS209TT6	1.535" round	W209PPB6	B, BW, WB series disk	T29920*
T51610	DS211TTR3	1-1/2" square	GW211PPB3	K23, K23A, G59 disk (spherical O.D.)	DSG100MSA
T51653	DC211TTR3	1-1/2" square	GW211PP3	E30, G109, G110, G119, K23, K23A, disk harrow	—
T53781	DS210TTR2	1-15/16" round	GW210PPB2	F21, F21H disk harrow	DSG90MSA
T54897	DS210TTR5R	1.785" round	GW210PPB5	DOT B, 25, 28, AND 31 disk harrow	DSG90MSA
T56688	DC211TTR4	1-1/2" square	GW211PP4	K23B disk harrow	—
T57559	DS211TTR2	2-3/16" round	GW211PPB2	—	DSG100MSA
<b>CASE IH AND INTERNATIONAL HARVESTER</b>					
1251062C91	DS209TT2	1.7717" round	W209PPB2	—	DS85MS
ST491A	—	1-3/4" round	—	—	—
ST627A	DS211TT4	2.19" round	—	500 disk	DS100MS
ST740B	—	2-3/16" round	FD211RBA	500, 501, 596, 700, 770, MRX690, RMX370, RMX790	—

PREVIOUS-SPECIAL APPLICATION TIGER POINTS

8" (203mm) No-Till Point

- Part No. 51435492**
- 8" (203mm) wing span
  - Fracture 25%–50%
  - Remaining residue 70%–95%
  - 0"–2" (0–51mm) ridges
  - Operating depth 8"–16" (203–406mm)
  - Mounts on no-till shank only
  - Extended dorsal fin to protect the shank from wear

7" (178mm) Replaceable Tip Point

- Part No. 87460158**  
**Part No. 87412311** (replaceable tip)
- 7" (178mm) wing span
  - Fracture 30%–60%
  - Remaining residue 70%–90%
  - 2"–4" (51–102mm) ridges
  - Operating depth 8"–14" (203–356mm)

7" (178mm) Tiger Points

- Part No. 87460070** (1-1/4" shank)  
**Part No. 87460074** (1-1/2" shank)
- 7" (178mm) wing span
  - Fracture 30%–60%
  - Remaining residue 70%–90%
  - 2"–4" (51–102mm) ridges
  - Operating depth 8"–14" (203–356mm)

5" (127mm) Tiger Points

- Part No. 87460069**
- 5" (127mm) wing span
  - Fracture 30%–50%
  - Remaining residue 70%–90%
  - 2"–4" (51–102mm) ridges
  - Operating depth 8"–14" (203–356mm)

Tiger-C Points

- Part No. 33310060**
- 7" (178mm) wing span
  - Fracture 60%–80%
  - Remaining residue 60%–75%
  - 3"–4" (76–102mm) ridges
  - Operating depth 6"–12" (152–305mm)

2" (51mm) Tiger Point

- Part No. 87460075** (1-1/4" shank)  
**Part No. 87460071** (1-1/2" shank)
- Fracture less than 30%
  - Remaining residue 80%–90%
  - 2"–4" (51–102mm) ridges
  - Operating depth 8"–14" (203–356mm)

10" (254mm) Standard Tiger Point

- Part No. 87460072**
- 10" (254mm) wing span
  - Fracture 50%–70%
  - Remaining residue 70%–85%
  - 4"–6" (102–152mm) ridges
  - Operating depth 8"–16" (203–406mm)

10" (254mm) Replaceable Tip and Wing Tiger Point

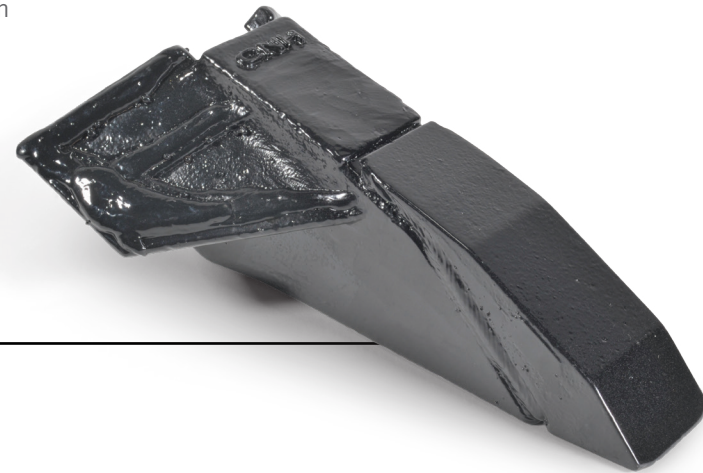
- Part No. 87460159**  
**Part No. 87412311** (replaceable tip)  
**Part No. 09907002** (replaceable wing – right hand)  
**Part No. 09907003** (replaceable wing – left hand)
- 10" (254mm) wing span
  - Fracture 50%–70%
  - Remaining residue 70%–85%
  - 4"–6" (102–152mm) ridges
  - Operating depth 8"–16" (203–406mm)

MAKE WAY FOR THE NEW GENERATION

Less draft and less downtime with the new generation Tiger Points.

The unique “lift, twist and roll” capability of Case IH Tiger Points aggressively fractures tough compaction. The sturdy alloy-steel construction of the new generation Tiger Point is based on years of in-depth research on tillage and planting agronomics.

Our testing shows the new generation Tiger Point creates less draft than competitive points, which results in reduced fuel consumption. With a fresh, innovative design, the new generation Tiger Point is up to three times more wear-resistant than previous Tiger Points—which means less downtime and more field time.



New Generation Tiger Point

Part No. 48047835

- Lasts up to three times longer than original Tiger Points
- 7" wing
- 1.25" shank

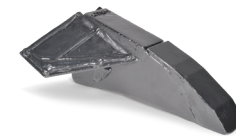
NOTHING TILLS LIKE A TIGER

Soil compaction is a leading factor in crop yield reduction, but most points do little to alleviate it. Case IH Tiger Points are different, handling even the toughest residue. The tough, flexible alloy-steel construction is based on years of in-depth research on tillage and planting agronomics. It's all about the lift, twist and roll:

**LIFT**  
The tip starts the fracturing by lifting the compacted soil.

**TWIST**  
The front area of the wing starts the twisting action, which relocates soil layers and prevents immediate re-compaction.

**ROLL**  
The back of the wings and the shank finish the job by rolling the soil to incorporate fertilizer and residue.



10" (254mm) Tiger Point

Part No. 48058596 (1-1/2" shank)

- 10" (254mm) wing span
- Fracture 50%–70%
- Remaining residue 70%–85%
- 4"–6" (102–152mm) ridges
- Operating depth 8"–16" (203–406mm)



7" (178mm) Tiger Point

Part No. 48058575 (1-1/2" shank)

- 7" (178mm) wing span
- Fracture 30%–60%
- Remaining residue 70%–90%
- 2"–4" (51–102mm) ridges
- Operating depth 8"–14" (203–356mm)



2" (51mm) Tiger Point

Part No. 47828897 (1-1/4" shank)

- Fracture less than 30%
- Remaining residue 80%–90%
- 2"–4" (51–102mm) ridges
- Operating depth 8"–14" (203–356mm)



MANUFACTURER	PART NO.	BORE	REFERENCES	APPLICATION	FLANGE
<b>CHAS MACHINE</b>					
—	DC208TT5	1-1/8" square	W208PP5	Trencher	—
<b>CHATANOOGA</b>					
—	DS208TT5	1-1/8" square	W208PPB5	—	DS80MS
—	DS211TT6	1-1/2" square	W211PPB6	Levi, Levi-Dyke plow	DS100MS
<b>DEUTZ-ALLIS</b>					
—	DC211TT3	1-1/2" square	W211PP3	K7 disk	—
430478	DS209TT2	1.7717" round	W209PPB	Disk harrow	DS85MS
430796	DS208TT7	1-3/16" round	W208PP7	—	DS80MS
70583939	DS211TTR3	1-1/2" square	GW211PPB3	2600 disk	DSG100MSA
<b>DOMRIES</b>					
270061503	DC214TTR3	2.688" round	GW214PP3	—	—
H747139	DC208TT5	1-1/8" square	W208PP5	Trencher boom end sprocket	—
<b>DMI</b>					
21842400	DS209TTR4	1.535" round	GW209PPB4	—	—
<b>DUNHAM</b>					
—	DS208TT12	1-1/8" square	W208PPB12	Disk harrow (wide O.R.)	—
GK260	DS208TT5	1-1/8" square	W208PPB5	Disk harrow	DS80MS
<b>EVERSMAN</b>					
261750	DS208TT5	1-1/8" square	W208PPB5	—	DS80MS
266740	DS208TT12	1-1/8" square	W208PPB12	—	—
<b>EZEE ON</b>					
—	DS214TTR3	1.938" round	GW214PPB3	Disk harrow	—
<b>FARMHAND</b>					
11504	DC214TTR3	2.688" round	GW214PP3	—	—
10771	DS210TT2	1-15/16" round	W210PPB2	—	DS90MS
1A64318	FD209RB	1-1/2" round	DHU1-1/2R209	Disk harrow	—
1R41009	DS208TT5	1-1/8" square	W208PPB5	—	DS80MS
310072	DS209TT2	1.7717" round	W209PPB2	Disk harrow	DS85MS
340103	DS209TT4	1.535" round	W209PPB4	Disk harrow	DS85MS
7377-1	DS211TT3	1-1/2" square	W211PPB3	216 and 100 beet harvest	DS100MS
EP5403	DC211TTR4	1-1/2" square	GW211PP4	—	—
EP6576	DS209TTR4	1.535" round	GW209PPB4	—	—
G10771	DS210TTR2	1-15/16" round	GW210PPB2	Disk harrow	—

MANUFACTURER	PART NO.	BORE	REFERENCES	APPLICATION	FLANGE
<b>FMC</b>					
15148	DC208TT10	1-1/2" round	W208PP10	—	—
15617	DS208TT2A	1-1/2" round	W208PPB2	Disk harrow	DS80MS
<b>FORD</b>					
113903	DS209TT2	1.7717" round	W209PPB2	204, 210, 224, 230 disk	DS85MS
177849	DC210TT2	1-15/16" round	W210PP2	—	—
7200460	DS209TR2	1-3/4" round	GW209PPB2	230, 201, 202, E, J, L disk harrow	DSG85MSA
MULCB112SG	DS211TT3	1-1/2" square	W211PPB3	236 cutting disk	DS100MS
MULCBB112	DC211TT3	1-1/2" square	W211PP3	219, 223 cutting disk	—
NDAS4508BJ	DS208TT5	1-1/8" square	W208PPB5	—	—
SBP238481B	DS208TR8	1-1/8" square	GW208PPB8	241, 242M 243M 246 disk harrows	DSG80MSA
SFL2042	DS211TR13	1-3/4" round	GW211PPB13	251 disk harrow	DSG100MSA
<b>FOREST CITY</b>					
—	DC208TT5	1-1/8" square	W208PP5	Ridgers	—
<b>G&amp;M</b>					
—	DS210TT2	1-15/16" round	W210PPB2	3 PT vinyard disk	DS90MS
<b>GLENCOE</b>					
YB8400	DS209TR4	1.535" round	GW209PPB4	Yield builder disk gang and basket	—
YB8500	FD209RB	1-1/2" round	DHU1-1/2R209	Yield builder disk gang with riveted flange	—
<b>GREAT PLAINS</b>					
822-208C	FD209RB	1-1/2" round	DHU1-1/2R209	Ultra-till disk gang, turbo-chopper basket	—
822-209C	FD209RK	1-1/4" square	DHU1-1/4S209	Turbo rolling spike harrows	—
—	FD211RE	1-3/4" round	DHU1-3/4S211	4360A, 5300A, 6360A, 7225A, 7300A, 9225A	—
<b>GREENLINE</b>					
—	DS211TR3	1-1/2" square	GW211PP3	Disk harrow	DSG100MSA
<b>HARDEE</b>					
—	DS208TT12	1-1/8" square	W208PPB12	Disk harrow	—
<b>HESSTON</b>					
700700613	FD209RB	1-1/2" round	DHU1-1/2R209	2540 soil saver	—
700710152	DS208TT6	1" square	W208PPB6	Disk harrow	DS80MS
<b>HESTER</b>					
—	DC208TT5	1-1/8" square	W208PP5	Disk harrow	—
<b>HINKER</b>					
—	DS211TR2	2.19" round	—	Coulter chisels	DSG100MSA
<b>IMCO</b>					
—	DS208TT12	1-1/8" round	W208PPB12	Wheel disk	—

**BEAT COMPACTION AND BOOST YIELD POTENTIAL.**

Compaction acts like a brick below the surface of your fields—restricting water and root infiltration, preventing optimal plant growth and ultimately limiting your yield potential. Locating and breaking up your field's compaction layer helps improve moisture management and soil composition, two of the most important ways to impact yield.

**Finding Compaction**

Check for compaction layers before and during fall tillage to optimize break up. To find hard pan in your fields:

- Dig a hole about 16 inches deep (roughly the size of a 5-gallon bucket).
- Stick a pocket knife into the bottom side wall and pull upward until you feel a resistance change—it will be abrupt in most cases.
- The compaction layer will measure approximately 2- to 3-inches thick, with the bottom of the layer generally located 8 to 10 inches below the soil surface.

**Improving Water and Nutrient Availability**

Compaction management pays off in wet and dry years. In wet conditions, you want to break up hard pan so water isn't suspended in the top six inches of working soil. Water should move vertically rather than horizontally in the soil. This also allows excess moisture to find tile lines quicker.

During dry years, you want water to seep downward rather than stay suspended in the working soil where it can be more readily evaporated. Managing compaction also allows applied nutrients to move vertically through the soil. As plants grow, the maturing root structure can continue to grow downward, seeking the moisture and nutrients it needs.

The result: a healthy plant with a strong root structure.



*In the photo, the bottom of the compaction layer (white line) is 9 inches deep, with the top of the compaction layer approximately 6 to 7 inches deep, resulting in a 2- to 3-inch-thick layer. To check the hard pan in your fields, use a spade to dig a hole about 16 inches deep (roughly the size of a 5-gallon bucket). Take a pocket knife and stick it into the side wall and pull the knife upward until you feel a resistance change. It will be abrupt in most cases. The bottom of the compaction layer can generally be found from 8 to 10 inches deep. This leaves about 6 inches of working soil above the compaction layer.*



**KILL COMPACTION—ONE TIGER POINT AT A TIME**

Deep compaction between 6" (152mm) and 12" (305mm) deep is normally referred to as "plow pan" or "hard pan." Intermediate compaction at 3" to 6" (76 to 152mm) deep is caused by heavy equipment traffic such as combines, trucks and grain carts. Surface compaction at 0" to 3" (0 to 152mm) deep is caused by rainfall and hydraulic effects.

When straight, wingless points run 16" (406mm) deep on 30" (762mm) centers, fracture and soil relocation is minimal and slotting occurs. At the bottom of the shank path, there is only slight, outward fracturing of the compaction layer.

Normal fracturing with a Tiger Point "fans out" at 45° and peaks in the middle between shanks. This aggressively shatters compaction between the shanks to maximize soil tilth and yield potential.



MANUFACTURER	PART NO.	BORE	REFERENCES	APPLICATION	FLANGE
<b>JOHN DEERE</b>					
A20175	—	1-1/8" square	GW208PPB5	100, 110 disk	—
A20649	DS209TTR10	1-3/4" round	GW209PPB11	210, 220, 230 disk	DSG85MSA
AA14878	DC208TT8	1-1/8" square	W208PP8	101 chisel plow, WDC, 23, 2FK, F871, F901, F902, F984, bedders	—
AK32778	DC211TT2	2.188" round	W211PP2	—	—
AK33797	DC210TT	1-15/16" round	W210PP10	80, 100, 225, 325, 414, 414A, 416, 1200, 1400, 2200, 2400, 3000, 4000	—
AK3892B	DC208TT2	1" square	W208K2-E9003	K, KBA, KBL, KBY, FW, RW, GR, GRL, disk harrow	—
AN240220	DS209TTR4	1.535" round	GW209PPB4	Disk harrow with 1.535" axle	—
AN240221	DS211TTR13	1-3/4" round	GW211PPB13	Disk harrow with 1-3/4" axle	DSG100MSA
AW20540	DS208TT2A	1-1/2" round	W208PPB2	Disk harrow with 1-1/2" axle	DS80MS
B34215	DS211TTR9	2-3/16" round	GW211PPB9	300, 310, 315, 330, 331, 335, 340, 350, 355, 360 DISK; 1700, 1710, 1710	DSG100MSA
GZ379381	FD211RJA	1-15/16" round	DHU11516R211	400, 600, 610, 810 harrows	—
JD8656	DC211TTR2	2-3/16" round	GW211PP2	Disk harrow with 2-3/16" axle	—
JD8664	—	1-1/4" square	W209PPB5	9000 drill, 4400 combine	—
JD8664	DS209TT8A	1-1/4" square	W209PPB8	9000 drill, 4400 combine narrow O.R. BRG.	DSG85MSA
JD9248	DS208TT5	1-1/8" square	W208PPB5	8500, F810H, F850H, 4, 5, and 6 tillers	DS80MS
JD9338	HPC100GP	1" square	206KKR6	450, 515, 520, 8000 grain drill, 50 series corn head	—
JD9350	DC208TT5	1-1/8" square	W208PP5	F871, F901, F984, F981, F982 bedder, 2700 BSN 1199	—
<b>KELLY</b>					
05A51001	DS209TTR4	1.535" round	GW209PPB4	—	—
06A51001	DS208TT5	1-1/8" square	W208PP5	—	DS80MS
06A51-001	DC208TT5	1-1/8" square	W208PP5	Coulter	—
<b>KENT</b>					
FC0481	FD209RB	1-1/2" round	DHU1-1/2R209	Disk harrow	—
<b>KEWANEE</b>					
B2055	DC211TT3	1-1/2" square	W211PP3	Disk harrow with 1-1/2" axle	—
B2151	DS208TTR8	1-1/8" square	GW208PPB8	100, 200, 170, 236, 300, 500, 600, 700, 900 series	DSG80MSA
B2246	DS210TTR4	1-1/8" square	GW210PPB4	1000, 1025, 1100, 1200 built before 1978	DSG90MSA
B2725	FD209RM	1-1/8" square	DHU1-1/8S209	1000 series built after 1978, 1025, 1030, 1100, 1175 series	—
B3587	FD211RM	1-1/2" square	DHU1-3/4S211	1200 series	—
B3625	DC208TT10	1-1/2" round	W208PP10	Disk harrow	—
B7778	DS209TTR2	1-3/4" round	GW209PPB2	209, 218 disk	DSG85MSA
B7980/G0052604	DS208TT5	1-1/8" square	W208PPB5	206, 400 disk	DS80MS
B8018	DC208TT5	1-1/8" square	W208PP5	Disk harrow with 1-1/8" axle	—
G1046244	DC211TTR2	2-3/16" round	GW211PP2	Disk harrow with 2-3/16" axle	—
G1046430	DC211TTR3	1-1/2" square	GW211PP3	Disk harrow with 1-1/2" axle	—
G1436183	DC208TTR17	1-1/8" square	GW208PP17	Disk harrow with 1-1/8" axle	—

MANUFACTURER	PART NO.	BORE	REFERENCES	APPLICATION	FLANGE
<b>KING PLOW</b>					
BB-2	—	7/8" square	W208PPB11	CFB disk harrow	—
BB-2N	DS208TT12	1-1/8" square	E208PPB12	KGB, WGH, EZB, MFB, disk harrow	—
<b>KRAUSE</b>					
1927-11-0	CDS209TTR	1.530" round	—	1900-1928, 2135-2166, 2200, 4900 series rock flex	—
40102/P-212-10-2	DS208TT7	1-3/16" round	W208PPB7	405-408	DS80MS
40-103/P350-10-1	DS210TT5	1-3/4" round	W210PPB5	Disk harrow	DS90MS
40-104/P412-10-2	DS209TT4	1.535" round	W209PPB4	408A-412, 610-629, 636-641, 900-908, 952-969, 1144-1156, 1401-1428, 1576-1592A, 1900-1928, 1952-1979, 2135-2166	DS85MS
40-105/612-10-2	DS209TTR4	1.535" round	GW209PPB4	900-908, 952-969, 1144-1156, 1401-1428	—
40-109/1934-12-0	FD209RB	1-1/2" round	DHU1-1/2R209	1590, 1576-1592A, 1900-1928, 1952-1979, 2100-2166, 2190-2196, 2200-2244, 3948-3957, 3990-3994, 4900-4945, 4900A-4927A, 4950-4994	—
40-114	FD211RE	1-3/4" round	DHU1-3/4S211	1740-1767, 2400-2495, 4995, 5812-5824	—
40-119	DS209TTR6P	1.530" round	—	Disk harrow	—
2410-11-0/40-173	DS211TTR23	1-3/4" round	GW211PPB21	1740-1767, 2400-2495, 5812-5824	DSG100MSA
40-128	FD209RK	1-1/4" square	DHU1-1/4S209	Disk with 1-1/4" axle	—
612-10-2	DS209TTR4	1.535" round	GW209PPB4	Disk harrow	—
<b>LANDOLL</b>					
1065010003	DS209TTR4	1.535" round	GW209PPB4	—	—
1065010011	FD209RB	1-1/2" round	DHU1-1/2R209	Weather proofer disk gang, harrows	—
140464	DC211TTR21	1-3/4" round	GW211PP25	6230, 7410VT, 7430VT, 7431VT, 7450VT	—
—	DS211TTR23	1-3/4" round	GW211PPB21	8300 weather proofer	DSG100MSA
<b>LILLISTON</b>					
37-61-001	DS208TT12	1-1/8" square	W208PPB12	—	—
40-61-001	DS209TT7	1-1/4" square	W209PPB7	—	—
40-61-005	DS209TTR8	1-1/4" square	GW208PPB8	—	DSG85MSA
<b>LOCKWOOD</b>					
202112	DC208TT10	1-1/2" round	W208PP10	—	—
<b>LONG</b>					
9-90092	DS208TT12	1-1/8" square	W208PPB12	958, 959 disk	—
9-90093	—	7/8" square	W208PPB11	953, 956 disk	—
9-90155	DS209TT7	1-1/4" square	W209PPB7	Disk harrow	—
9-90241	DS211TT6	1-1/2" square	W211PPB6	958, 959, 960, 1090, disk harrow	DS100MS
9-92088	DS211TTR3	1-1/2" square	GW211PPB3	—	DSG100MSA
<b>M&amp;W</b>					
2436003	DC211TTR3E	1-1/2" square	—	Earthmaster	—



COULTER TYPE	PART NO.	DIAMETER (IN)	THICKNESS (MM)	CENTER HOLE DIA. (IN)	CENTER	NO. OF HOLES	BOLT CIRCLE (INCHES/MM)
Straight/rippled coulters disk (2 sets of holes)	140445A2	17	4	4	—	4	5 (127)
					—	8	5.25 (133.4)
Straight/rippled coulters (center hole only)	812362C1	20.4	4.5	1.25 sq	SR3	—	—
	28597R1	20.4	5	1.5 rd	SR4	—	—
	790-1002	20.4	6.5	1.5 rd	SR4	—	—

**Soilwave Coulters**

COULTER TYPE	PART NO.	DIAMETER (IN)	THICKNESS (MM)	CENTER HOLE DIA. (IN)	NO. OF HOLES	BOLT CIRCLE (INCHES/MM)	TYPICAL USES
SoilWave	73343444	16	4.5	4	4	5/5.25	Great Plains, Kinze, White
	73343445	17	5	4	4	5/5.25	Great Plains Drills, coulters carts
	73343446	20.3	5	SR5	—	—	Great Plains Turbo Till
	73343447	20.3	5	SR5	—	—	Great Plains Turbo Till



**EARTH METAL® COULTERS**



Your Case IH dealer offers a full line of fluted, wavy, and straight coulters—allowing for implement customization to match any trash-cutting requirements, and soil and speed conditions. What’s more, they’re made from durable Earth Metal steel, making them the toughest coulters on the market.

COULTER TYPE	PART NO.	DIAMETER (IN.)	THICKNESS (MM)	CENTER HOLE DIA. (IN)	NO. OF HOLES	BOLT CIRCLE (INCHES/MM)	CUTTING WIDTH (IN/MM)	TYPICAL USES
8-Wave Deep	87400930	17.6	4.5	4	4	5.25 (133.4)	1.85 (47)	Rawson, Salford
	73340375	20	4.5	4	4	5.25 (133.4)	2.17 (55)	Salford
	73341695	22	5	4	5	5.25 (133.4)	2.3 (58)	Salford
8-Wave	130800A2	14.3	4	4	8	5 (127)	0.75 (19)	—
	140447A2	18.1	4	4	8	5 (127)	1.06 (27)	—
Bubble fluted	87400935	15.8	4	4	8	5 (127)	0.63 (16)	Kinze GD9254
	87298834	16	4	4	4	5.25 (133.4)	0.63 (16)	Kinze GD9255 White 854086
	129195A2	17.6	4	4	8	5 (127)	0.75 (19)	Great Plains 820-082C
	87400941	17.6	4	3.78	6	5 (127)	0.78 (20)	Unverferth
	87400936	18	4.5	4	8	5 (127)	0.75 (19)	Salford
	87400937	20.4	4.5	4	8	5 (127)	0.87 (22)	Salford
	443637A1	22	4.5	3.65	4	5 (127)	1.2 (30)	—
	431542A1*	14.7	4	4	4	5.25 (133.4)	0.63 (16)	Yetter 2571-166
	87413628	15.8	4	4	8	5.25 (133.4)	0.63 (16)	Krause 30-228
25-Wave	321165A2	17.6	4	4	8	5.25 (133.4)	0.63 (16)	Yetter 2571-179
	140450A2	15.8	4	4	8	5 (127)	0.75 (19)	Kinze GD7804

COULTER TYPE	PART NO.	DIAMETER (IN)	THICKNESS (MM)	CENTER HOLE DIA. (IN)	NO. OF HOLES	BOLT CIRCLE (INCHES/MM)	EDGE	TYPICAL USES
Straight/ rippled coulters disk	87584040	15	5	1-1/2	4	4 (101.1)	Straight	—
	31399R1	17	4	1-1/2	4	4.5 (114.3)	Rippled	—
	1344516C1	17	4	4	4	5.25 (133.4)	Rippled	Yetter 2571-158
	87299128	17	4.5	2	6	3.5 (88.9)	Notched	Kinze GD12676
	141205C2	18.4	4	2.6	4	4.25 (108)	Straight	—
	443627A1	20.4	4.5	3.6	4	5 (127)	Rippled	—
	443626A1	20	4.5	3.6	4	5 (127)	Straight	—
	73343422	20	4.5	4	4	5/5.25	Rippled	Unverferth, Deere, Fast
	28341R1	20.4	4.5	1-1/2	4	4.5 (114.3)	Rippled	—
	T54196	20.4	4.5	4	4	5.25 (133.4)	Rippled	—
	73343451	20.4	4.5	2.1	4	3.2 (81)	Rippled	Overum Plow
	73342950	22.6	6.5	1-3/4	—	—	Straight	Landoll 144536
	122567C1	22.6	4.5	1-1/2	4	4.5 (114.3)	Rippled	—
	443635A1	22.6	4.5	3.6	4	5 (127)	Straight	—
	73342951	24.8	6.5	1-3/4	—	—	Straight	Krause 30-246
	443638A1	24.8	4.5	3.6	4	5 (127)	Straight	—

\*Not Earth Metal

MANUFACTURER	PART NO.	BORE	REFERENCES	APPLICATION	FLANGE
<b>MASSEY FERGUSON</b>					
1905678M1	DC211TT3	1-1/2" square	W2112PP3	Disk harrow with 1-1/2" axle	—
447899M1	DS208TT12	1-1/8" square	W208PPB12	34MTD and 33 REV. disk	—
449432M1	DS211TTR3	1-1/2" square	GW211PPB3	30, 40, 520, 620, 720 disk harrow	DSG100MSA
8311103M1 832634M2	DS208TT2A	1-1/2" round	W208PPB2	36, 52, 75 disk harrow	DS80MS
831960M3	DS210TT2	1-15/16" round	W210PPB2	Plow	DS90MS
832540M1	DS211TT3	1-1/2" square	W211PPB3	38 41 42 disk harrow	DS100MS
834367M1 1025130M1	DS208TT6	1" square	W208PPB6	21 disk harrow	—
835050M1	DS209TT2	1.7717" round	W209PPB2	28, 33, 34, 39, 68 disk harrow	DS85MS
842303M1	—	1-1/4" square	W209PPB5	520, 620, 820 disk harrow	—
842323M1 1066086M1	DS209TTR5	1-1/4" square	GW209PPB5	520, 620, 820 disk harrow-relobe bearing	DSG85MSA
843638M1 1905666M1	DS208TT5	1-1/8" square	W208PPB5	Disk harrow with 1-1/8" axle	DS80MS
<b>MCCLESKY</b>					
—	DS208TT12	1-1/8" square	W208PPB12	F228, L150 harrow	—
<b>MCFARLANE</b>					
RT2274	DS211TTR3	1-1/2" square	—	RD4000 BSN 12946, RT2000, RT3000	DSG100MSA
RD4498	FD211RM	1-1/2" square	—	RD4000 ASN 12947	—
DRB3826	FD209RB	1-1/2" round	—	RD4000 rolling basket ASN 12756	—
<b>MELROE</b>					
6510628	DC211TT3	1-1/2" square	W211PP3	—	—
6519831	DS208TT6	1" square	W208PPB6	—	DS80MS
<b>MIDLAND</b>					
15620	DS209TTR8	1-1/4" square	GW209PPB8	Disk	DSG85MSA
<b>MILLER</b>					
4000044	DS211TTR13	1.785" round	GW211PPB13	Series I, II and heavy-duty disk with 24" & 26" disks	DSG100MSA
4000005	DS211TTR2	2.19" round	GW211PPB2	Early models with cast spools	DSG100MSA
<b>MINN-MOLINE</b>					
—	DC208TT5	1-1/8" square	W208PP5	Hipper, ridger	—
20H2152	DS209TT2	1.7717" round	W209PPB2	Disk harrow	DS85MS
20H5836	DS208TTR6	1" square	GW208PPB6	KA disk harrow	DS80MS
<b>MULTI-PURPOSE</b>					
—	DC208TT5	1-1/8" square	W208PP5	Ridger	—
42424	—	7/8" square	W208PPB11	—	—
<b>NEW HOLLAND</b>					
276882	DS209TTR2	1-3/4" round	GW209PPB2	—	DSG85MSA
NDAS4508BJ	DS208TT5	1-1/8" square	W208PPB5	—	DS80MS
NDAS4508FF	DS208TT13	7/8" square	W208PPB13	—	DS80MS
SPB238481B	DS208TTR8	1-1/8" square	GW208PPB8	—	DSG80MSA

MANUFACTURER	PART NO.	BORE	REFERENCES	APPLICATION	FLANGE
<b>OLIVER</b>					
237092B	DS208TT7	1-3/16" round	W208PPB7	241, 352, 250 series wheel disk harrow	DS80MS
238481B	DS208TTR8	1-1/8" square	GW208PPB8	263 disk	DSG80MSA
30-1005197	DS208TT5	1-3/16" round	W208PPB7	—	DS80MS
<b>PICO</b>					
4404-P	DC211TT3	1-1/2" square	W211PPB3	HD Levee plow, W0 series disk harrow	DSG85MSA
744-P	DC208TT5	1-1/8" square	W208PPB5	LO, 175, 185, 200, 206, 250, 300, LT400, 720	—
<b>PIPER</b>					
—	DC208TT5	1-1/8" square	W208PP5	Disk harrow and ridger	—
—	—	1-1/4" square	W209PPB5	DO-ALL	—
<b>ROME</b>					
—	DS208TT12	1-1/8" square	W208PPB12	7-1/2" disk harrow	—
<b>SHAFFER</b>					
—	DS209TT2	1.7717" round	W209PPB2	Disk harrow	DS85MS
—	DS210TT2	1-15/16" round	W210PPB2	Disk harrow	DS90MS
<b>STRATHMORE</b>					
3055	DC210TT2	1-15/16" round	W210PP2	—	—
3056	DS210TT2	1-15/16" round	W210PPB2	—	DS90MS
<b>SOUTHERN</b>					
—	DS208TT12	1-1/8" square	W208PPB12	Disk harrow, 13" pulverizing disk	—
<b>SUNFLOWER</b>					
1186	DS208TT7	1-3/16" round	W208PPB7	—	DS80MS
1829	DS209TTR4	1.535" round	GW209PPB4	—	—
2042	DS211TTR13	1-3/4" round	GW211PPB13	Disk harrow	DSG100MSA
24A5301	DS208TT5	1-1/8" square	W208PPB5	—	DS80MS
SN3091	DC211TTR21	1-3/4" round	GW211PP25	Disks 1130, 1211, 1212, 1231, 1232, 1233, 1234, 1321, 1331, 1431, 1432, 1433, 1434, 1435, 1441, 1442, 1443, 1444, 1541, 1543, 1544, 1550, 6630, 6631, disk rippers 4306, 4310, 4311, 4410, 4411, 4511, soil conditioners 7212, 7232, 7252	—
FK311007	FD209RK	1-1/4" square	DHU1-1/4S209	Disk harrow	—
YYB3471	FD209RM	1-1/8" square	DHU1-1/8S209	Disk harrow	—
<b>TALBOT</b>					
T151	DS208TT8	1-1/8" square	W208PPB8	—	DS80MS
<b>TAYLOR</b>					
—	DS209TTR5	1-1/4" square	GW209PPB5	Disk harrow	DSG85MSA
204147	DS208TT12	1-1/8" square	W208PPB12	Disk harrow light duty, 12-1/2, 19, 21	—
204147G	DS208TT12A	1-1/8" square	W208PPB19	Disk harrow	—
204679	DS211TT6	1-1/2" square	W211PPB6	Disk harrow, extra heavy duty	DS100MS
206090	—	7/8" square	W208PPB11	Disk harrow	—
207022	DS211TTR3	1-1/2" square	GW211PPB3	Disk harrow, heavy duty	DSG100MSA
207359	DS208TTR8	1-1/8" square	GW208PPB8	200000, series disk	DSG80MSA
34392	DS208TT13	7/8" square	W208PPB13	—	DS80MS
606793	DC208TT5	1-1/8" square	W208PP5	—	—

ALL-MAKES EARTH METAL COULTERS FOR LANDOLL VT PLUS AND GREAT PLAINS

22" x 6.5mm

Part No. 73341304

Application: Landoll Vertical Tillage

- Shallow concavity with R46 center (1.765"/1.826" diameter)
- Interchangeable with Landoll (Part No. 155617)



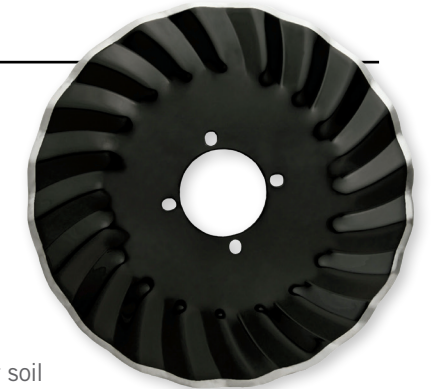
SOILWAVE COULTERS

Part No. 73343446 – (20.3" x 5mm)

Part No. 73343447 – (20.3" x 6.5mm)

Application: Great Plains Turbo Till®

- Made from proprietary Earth Metal
- Design allows for easier soil penetration in tough conditions
- 5/8" continuous wave height design; as the blade wears, the wave height and soil action do not change, and the blade maintains its aggressive action



20" x 6.5mm

Part No. 73343450

Part No. 155619 (Landoll)

Application: Landoll Vertical Tillage

- Shallow concavity with R46 center
- Made from rollable Boron alloy
- Interchangeable with Landoll

Soilrazor™ Disk Blades

The unique saw-tooth design allows this blade to capture and size tough and heavy residue. What's more, as the cutting edge wears away, it maintains its cutting ability. This is made possible because of the unique flute design. As the blade begins to wear, the flutes shift—the hills become the valleys and the valleys become the hills.



Features/Benefits

- The unique design is extremely well-suited for cutting through the toughest of residue
- Saw-tooth design for exceptional penetration in hard and compact soil conditions
- Excellent clod-crushing capability

Part No. 73341179FI

- Crimp center
- 28" x 6mm
- 1-1/2" square center hole

Part No. 73343638FI

- Full concavity
- 28" x 6mm with pilot hole center
- Center will be cut to the customer's needs

Part No. 73344416

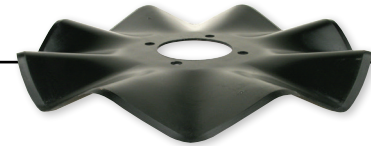
- VT Blade
- 24" x 6.5mm
- 1-5/8" arbor bolt hole



ALL-MAKES EARTH METAL® COULTERS



17.2" x 4.5mm

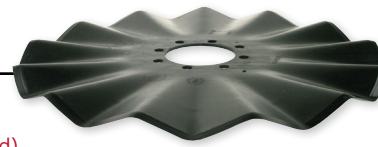


Part No. 87400930

Application: Salford RTS

- More aggressive 8-wave design stands up to rugged, high-speed applications, cuts and distributes the soil to prepare the soil bed

20" x 4.5mm



Part No. 87400937

Part No. CT512013 (Salford)

Application: Salford RTS

- Less aggressive 13-wave design stands up to rugged, high-speed applications, cuts and distributes the soil to prepare the soil bed

22" x 4.5mm



Part No. 73341695

Part No. CT512208 (Salford)

Application: Salford RTS

- Very aggressive 8-wave design stands up to rugged, high-speed applications, cuts and distributes the soil to prepare the soil bed

18" x 4.5mm



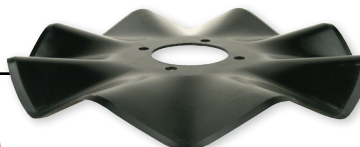
Part No. 87400936

Part No. CT511713 (Salford)

Application: Salford RTS

- Less aggressive 13-wave design stands up to rugged, high-speed applications, cuts and distributes the soil to prepare the soil bed

20" x 4.5mm



Part No. 73340375

Part No. CT512008 (Salford)

Application: Salford RTS

- Very aggressive 8-wave design stands up to rugged, high-speed applications, cuts and distributes the soil to prepare the soil bed

MANUFACTURER	PART NO.	BORE	REFERENCES	APPLICATION	FLANGE
<b>TOWNER</b>					
7906	DS208TT8	1-1/8" square	W208PPB8	101 ridger	DS80MS
7992	DC208TT5	1-1/8" square	W208PP5	100, 101 ridger	—
15013	DS208TT12	1-1/8" square	W208PPB12	101 ridger, 420, 425 disk	—
18300	DS211TT6	1-1/2" square	W211PPB6	510, 515, 577, 532, 534, 535, 560, 600, 620, 621, 630	DS100MS
<b>TUFLINE</b>					
T60	DS208TT5	1-1/8" square	W208PPB5	Disk harrow, 1-1/8" gang bolt	DS80MS
T602	DS208TT12	1-1/8" square	W208PPB12	Disk harrow, 1-1/8"	—
T603	—	7/8" square	W208PPB11	Disk harrow with 7/8" gang bolt	—
<b>TYE</b>					
552207	DS208TT6	1" square	W208PPB6	—	DS80MS
552209	DC208TT5	1-1/8" square	W208PP5	—	—
<b>UNVERFERTH</b>					
7044	DS209TT2	1.7717" round	W209PPB2	Disk harrow	DS85MS
91134	FD209RB	1-1/2" round	DHU1-1/2R209	Disk harrow	—
<b>W&amp;A MFG</b>					
481202	DC208TT5	1-1/8" square	W208PP5	Ridger and does more	—
481213	DC211TTR3	1-1/2" square	GW211PP3	—	—
481217	DC208TTR17	1-1/8" square	GW208PP17	—	—
<b>WHITE</b>					
213778B	—	1-1/8" square	GW208PPB5	Disk harrow with 1-1/8" axle	—
237092B	DS208TT7	1-3/16" round	W208PPB7	251, 252, 253	DS80MS
237909B	DS211TTR3	1-1/2" square	GW211PPB3	265, 281	DSG100MSA
238799B	FD209RM	1-1/8" square	DHU1-1/8S209	Late 271, 272 disks	—
408808D	DC210TT2	1-15/16" round	W210PP2	Disk harrow with 1-15/16" axle	—
W238481B	DS208TTR8	1-1/8" square	GW208PPB8	254, 255, 256	DSG80MSA
W238813	FD209RB	1-1/2" round	DHU1-1/2R209	273, 274	—
<b>WILRICH</b>					
24022	DS211TTR2	2-3/16" round	GW211PPB2	Disk harrow	DSG100MSA
24677	DC208TTR17	1-1/8" square	GW208PP17	—	—
25703	FD211RM	1-1/2" square	DHU1-1/2S211	Disk harrow	—
30185	FD211RJA	1-15/16" round	DHU11516R211	DO-ALL seed bed, 1400, 1403	—
34002	DS209TT4	1.535" round	W209PPB4	—	DS85MS
<b>WISHEK</b>					
1102-214	DS214TTR3	1.938" round	GW214PPB3	Disk harrow	—

Salford is a registered trademark of Salford Group Inc.

## BARRACUDA KITS FOR CASE IH VERTICAL TILLAGE TOOLS



These premium blades move residue up, over and laterally to stratify soil particles, increase aeration for improved soil tilth and provide faster nutrient cycling for next year's crop. Whether someone is conventional-till or min-till, these blades can be adjusted for shallow or deeper passes to slice and manage residue on top without causing compaction below. These kits can be operated on the Case IH 330 Turbo, 335 VT and 335 Barracuda. Please note that for retro-fitting, additional parts are necessary.

### Barracuda Blades Features

- Aggressive 22-inch serrated chisel-tip blades – capable of cutting up to four inches deep in one pass.
- As the chisel-tipped teeth wear, the valley between each tip stays sharp, becoming the cutting edge and extending the blade's life.
- The blade's shallow concavity and unique crimped center provide an even cutting and mixing action without causing compaction.
- Provide faster breakdown and increased nutrient cycling.



### Barracuda Kits

PART NO.	DESCRIPTION	SPOOLS	APPLICATION
48048505	Barracuda Kit – 22 ft.	Yes	335 Barracuda, 330 Turbo or 335 VT
48048506	Barracuda Kit – 25 ft.	Yes	
48048507	Barracuda Kit – 28 ft.	Yes	
48048508	Barracuda Kit – 31 ft.	Yes	
48048509	Barracuda Kit – 34 ft.	Yes	
47891984	Barracuda Kit – 42 ft.	Yes	
47891985	Barracuda Kit – 47 ft.	Yes	335 Barracuda or 330 Turbo/335VT previously converted to Barracuda blades
73344152*	Barracuda Kit – 22 ft.	No	
73344153*	Barracuda Kit – 25 ft.	No	
73344154*	Barracuda Kit – 28 ft.	No	
73344155*	Barracuda Kit – 31 ft.	No	
73344156*	Barracuda Kit – 34 ft.	No	
73344157*	Barracuda Kit – 42 ft.	No	
73344158*	Barracuda Kit – 47 ft.	No	

\*These kits are applicable on the 335 Barracuda. Also, available for replacement on the 330 Turbo and 335 VT, however additional parts are necessary for this retrofit.

### Barracuda Kit Components\*

PART NO.	DESCRIPTION	NOTES
47827932	Disk, 22" LH, Barracuda	
47827928	Disk, 22" RH, Barracuda	
47827934	Disk, 20" LH, Barracuda	
47827933	Disk, 20" RH, Barracuda	
47654441	Disk, 18" LF-RR, Vert Till	
47654440	Disk, 18" RF-LR, Vert Till	
101191C1	Spool, Bearing 7-1/2 and 9	Only used on Barracuda Kit part numbers with spools
101189C1	Spool, Half Spacer 7.5" PTD SS	Only used on Barracuda Kit part numbers with spools

\*Quantities for each part number are dependent on the Barracuda Kit size. See your dealer for details.



## VT WAVE KITS FOR CASE IH VERTICAL TILLAGE TOOLS

Earth Metal VT Wave blades manage uneven fields to create ideal seedbed conditions for optimal seed emergence. VT Wave blades mix the heaviest residue for better decomposition and seedbeds preparation. Earth Metal VT Wave blades are stronger and more resistant to breaking and are recommended for rocky conditions. The VT Wave design uproots young weeds and removes surface compaction and crust, while leveling the seedbed.



### VT Wave Kits\*

PART NO.	DESCRIPTION
73344167	VT Wave Kit – 22 ft.
73344168	VT Wave Kit – 25 ft.
73344169	VT Wave Kit – 28 ft.
73344170	VT Wave Kit – 31 ft.
73344171	VT Wave Kit – 34 ft.
73344172	VT Wave Kit – 42 ft.
73344173	VT Wave Kit – 47 ft.

\*These kits are applicable on the 330 Turbo and 335 VT. Also, available for replacement on the 335 Barracuda, however additional parts are necessary for this retrofit.

### VT Wave Kit Components\*

PART NO.	DESCRIPTION
47654438	Disk, 20" x .256" LF-RR, VT Wave
47654439	20" x .256" RF-LR, VT Wave
47654441	Disk, 18" LF-RR, Vert Till
47654440	Disk, 18" RF-LR, Vert Till
47654442	Disk, 16" LF-RR, Vert Till
47654443	Disk, 16" RF-LR, Vert Till

\*Quantities for each part number are dependent on the VT Wave Kit size. See your dealer for details.

